



2008 AMENDED ANNUAL STORM FUND REPORT

May 14, 2009

Granite State Electric Company d/b/a National Grid Amended Annual Storm Fund Report

1. Introduction

Granite State Electric Company d/b/a National Grid (“National Grid” or “Company”) is submitting the following Amended Annual Storm Fund Report for 2008, in compliance with the requirements set forth in Exhibit GSE-7 of the Company’s Rate Plan Settlement in Docket No. DG 06-107.

As noted in the accompanying cover letter, the original Storm Fund Report submitted by National Grid contained data for only one storm – the December 11-12, 2008 ice storm. Since submitting the Storm Fund Report, National Grid continued to review its data and learned that a second storm, one that took place on June 29, 2008, also qualified for submission in accordance with the Storm Fund guidelines. Accordingly, the following Amended Storm Fund Report contains data and information for both qualifying storms.

In 2008, there were two qualifying “major storms.” The first took place on June 29, 2008. The second, which occurred on December 11-12, 2008, was the ice storm. As the Commission is aware, the December ice storm impacted multiple states and caused havoc in the weeks leading up to Christmas. In New Hampshire, the ice storm affected approximately 24,164 customers over 528 square miles, causing interruptions in 17 of the 21 communities served by National Grid. Despite the damage and large number of customer interruptions, National Grid led a successful storm restoration effort, which succeeded in restoring all of its New Hampshire customers by Thursday, December 18.

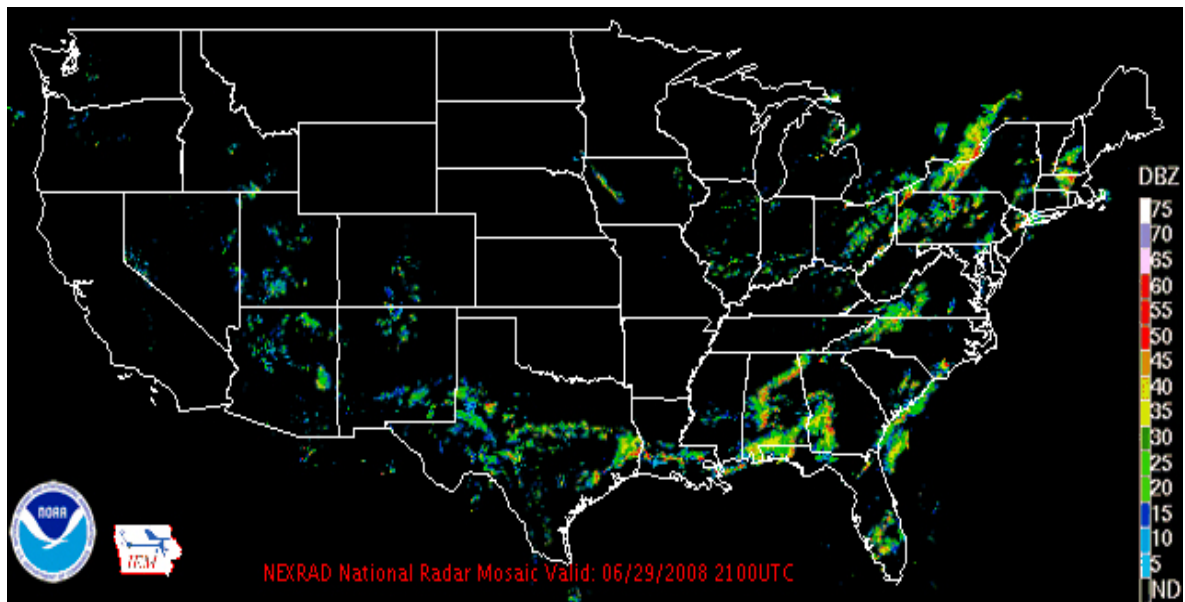
The instant report addresses the requirements found in § 5 of Exhibit GSE-7, namely: (1) provide a description of the storm; (2) provide a summary of the extent of the damage to the distribution system, including the number of outages and length of outages; (3) detail the collections credited to the storm fund; and (4) provide the details of any qualifying storm costs that were charged to the fund during the preceding calendar year.

2. Description of the Storm

A. June 29, 2008 Storm

On June 29, 2008, the western and southern portions of New Hampshire experienced a severe thunderstorm. The storm, which began as light rainfall at approximately 4:00 a.m. and continued intermittently throughout the day and more steadily throughout the night, included frequent lightning strikes, winds in excess of 45 m.p.h., heavy rain, and small-sized hail. This combination battered the area for hours causing tree damage and related customer interruptions. Figure 1 on the following page depicts the thunderstorm at approximately 2:00 p.m.

Figure 1 – June 29, 2008 Storm
NOAA NEXRAD Radar Mosaic, Sunday, June 29, 2008 at 2:00 p.m.

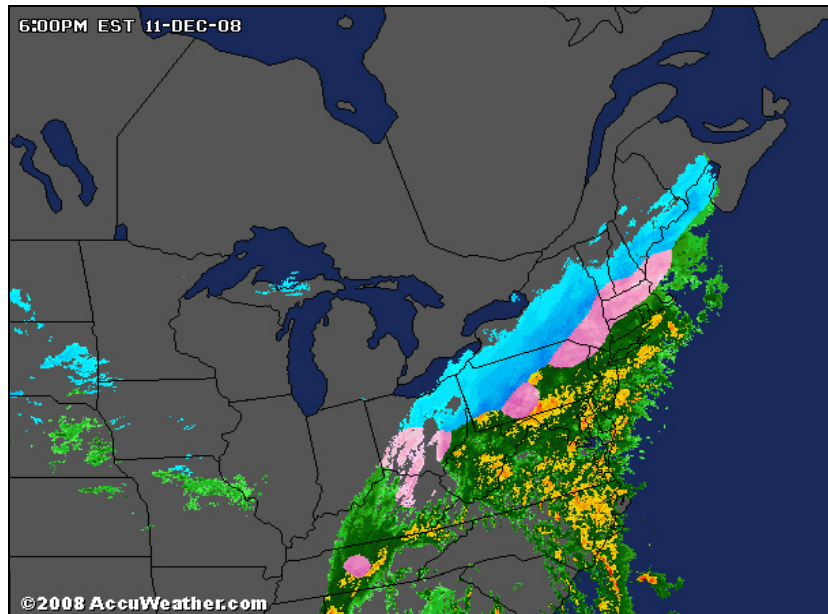


B. December 11-12, 2008 Ice Storm

From 6:00 p.m. on Thursday, December 11, until the late morning hours of Friday, December 12, a powerful winter storm struck New Hampshire, Massachusetts, and New York. Pouring rain, sleet, and ice from the storm knocked out power to hundreds of thousands of National Grid's customers across these regions. In New Hampshire, the storm impacted the central, southern, and southwest portions of the state. Hardest hit was southern New Hampshire, where monitoring stations reported between two to three inches of rainfall. The rainfall soon turned to ice, encrusting tree limbs and power lines in sheets of ice over an inch thick in some localities. Trees and limbs broke under the weight of the ice, knocking over utility lines and structures, and causing numerous customer interruptions.

Figure 2 on the following page demonstrates the expansiveness of the storm and its impact to New Hampshire. The pink shaded area indicates the band of freezing rain.

**Figure 2 – December 11-12 2008 Ice Storm
AccuWeather Radar Image, December 11, 2008 at 6:00 p.m.**



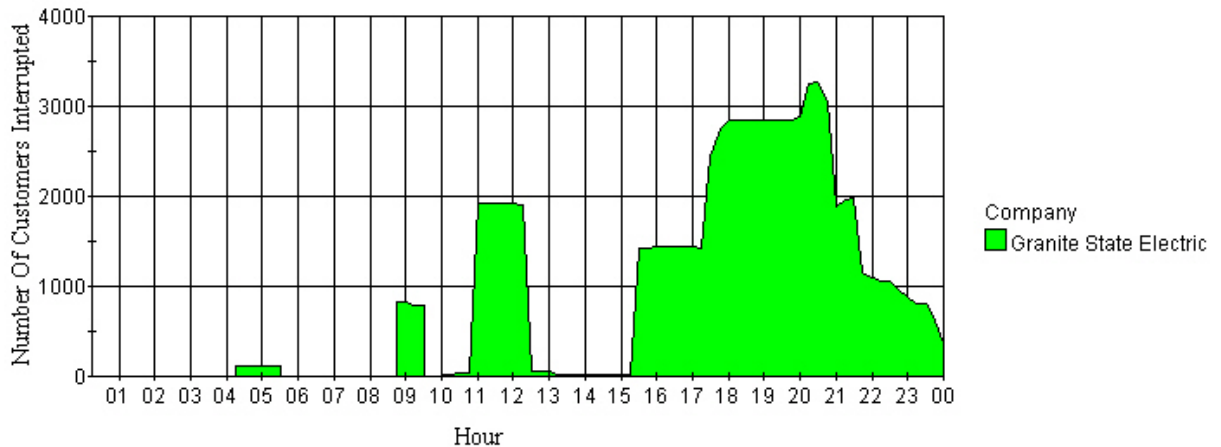
3. Summary of the Extent of the Storm Damage

A. June 29, 2008 Storm

Due to the severe thunderstorm on June 29, a portion of National Grid's New Hampshire customers were without power at some time from Sunday, June 29 until Monday, June 30. The interruptions were confined to the western (e.g., Walpole and Alstead) and southern (e.g., Salem and Pelham) portions of the state.

In all, National Grid experienced 6,332 total cumulative customer interruptions and 33 trouble events due to the June 29 storm. **Exhibit 1** details the daily customer interruptions on June 29 and reflects the 33 trouble events. Customer interruptions began at approximately 4:15 a.m. on June 29, with simultaneous customer interruptions peaking at 3,317 at 8:30 p.m. that night. National Grid restored power to the majority of customers by approximately 10:00 a.m. on June 30, with single service customers restored by late afternoon. Figure 3 on the following page demonstrates the peak customer interruptions.

**Figure 3 – June 29, 2008 Storm
Customers without Power, Sunday, June 29, 2008**



The majority of the damage to National Grid’s distribution system was caused by fallen trees and limbs, which impacted power lines and equipment and were responsible for the majority of customer interruptions. The damage included blown line fuses along with several primary and secondary spans pulled down by trees. **Exhibit 2** is a table that details the observed damage to the Company’s distribution system by circuit number.

In advance of the storm, National Grid conducted a storm conference call on Saturday, June 28 to discuss planning, as the weather forecast called for thunderstorms in New Hampshire and parts of Massachusetts for most of the weekend. Following the call, National Grid decided to commit standby crews for both Saturday and Sunday. Crews were not needed on Saturday, but on Sunday the severe thunderstorm caused significant outages in New Hampshire as well as the Merrimack Valley region in Massachusetts. In addition to the standby crews, National Grid called in additional crews to assist with the interruptions in New Hampshire.

In total, National Grid committed 9.5 internal line crews and 3 tree crews to the restoration effort in New Hampshire.

B. December 11-12, 2008 Ice Storm

The ice storm affected approximately 528 square miles of National Grid’s New Hampshire service territory, causing interruptions in 17 of the 21 communities served by the Company. The damage from the storm was so widespread that Governor Lynch in New Hampshire and Governor Patrick in Massachusetts declared states of emergency, which allowed the mobilization of additional emergency response assets to help clear debris and provide assistance to the impacted communities.

The most common cause of interruptions in National Grid’s service territory was fallen trees and limbs, which broke under the weight of the ice, causing damage to utility lines

and structures. While some poles and cross-arms required replacement, the majority of damage to the Company's distribution system in New Hampshire was related to the number of primary and secondary spans pulled down by fallen trees and limbs. **Exhibit 3** is a table that details the damage to the Company's distribution system by circuit number.

Due to the damage caused by the storm, a number of National Grid's New Hampshire customers were without power at some point from Thursday, December 11 through Thursday, December 18. Interruptions peaked at approximately 24,164 customers without power as of approximately 5:45 a.m. on Friday, December 12. This number represents approximately 63% of National Grid's potentially affected customers in New Hampshire.

Figure 4 details customer interruptions by locality percentage, and highlights the storm's impact in southern New Hampshire.

**Figure 4 – Customer Interruptions by Locality Percentage
December 12, 2008**

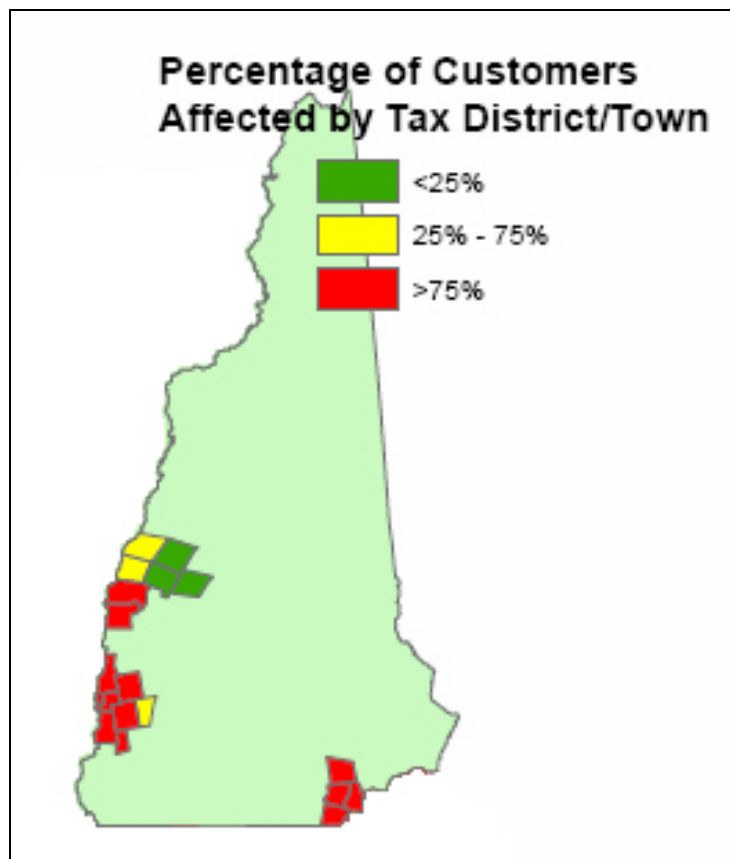
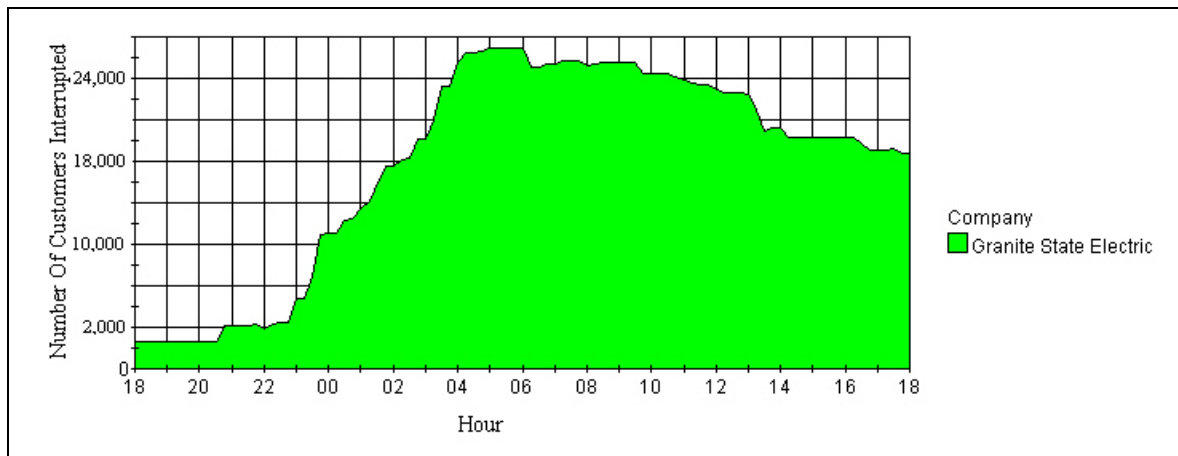


Figure 5 demonstrates the peak customer interruptions on December 12.

Figure 5 - Customers without Power, Thursday - Friday, December 11-12, 2008



Importantly, National Grid's restoration efforts began in advance of the start of the storm. This advanced work helped limit the restoration time to seven days despite the large number of interruptions, damage to the distribution system, and weather conditions, which refused to cooperate during the restoration effort. Indeed, in addition to the continued cold weather that left the ice intact in the days following the storm, New Hampshire experienced a snow event on December 15 through 16, which buried electric wires in roadside snow banks, requiring the use of additional supply cable to complete fallen spans. The inclement weather made restoration work and travel difficult and sometimes dangerous.

Despite the adversity, National Grid's restoration moved at a steady pace, with service returning to customers every hour of every day. By Thursday, December 18, National Grid restored all of its customers in New Hampshire, despite having a peak interruption of approximately 24,164 customers seven days earlier. A summary of the restoration is as follows:

• Thursday	December 11 at 11:59 p.m.	15,000	pre-peak
• Friday	December 12	24,164	peak
• Saturday	December 13	11,995	remaining
• Sunday	December 14	5,991	remaining
• Monday	December 15	2,695	remaining
• Tuesday	December 16	2,816	remaining
• Wednesday	December 17	481	remaining
• Thursday	December 18	186	remaining
• Thursday	December 18 at 10:19 p.m.	0	remaining

Exhibit 4 is a table that details customer interruptions by day from December 11 at 4:00

p.m. through December 18 at 11:00 p.m.

4. Collections Credited to the Storm Fund

Exhibit 5 is a report of the annual Storm Fund Activity. The report shows the opening balance in the fund, monthly contributions, monthly interest applied, and charges to the Storm Fund, both for the year ended 2007 and the year ended 2008.

5. Details of Qualifying Costs Charged to the Storm Fund in 2008

Exhibit 6 shows the charges to the Storm Fund related to the June 29, 2008 and December 2008 ice storm.

Please note that the costs found in Exhibit 6 do not reflect the total costs associated with the December 2008 ice storm; rather, they reflect the costs through the end of calendar year 2008. Additional 2009 charges to the fund related to the December ice storm will be reflected in the 2009 Storm Fund Report. At present, the cost of the restoration effort is estimated at \$2.8 million.

Interruption Search Results

Search Criteria

From Date: 06/29/2008 0:00 To Date: 06/30/2008 0:00
Company: Granite State Electric
33 interruption events match the criteria.

Results

Event Id: 7366014														District: Lebanon											
Date: 06/29/2008														Feeder Outage: No		Distribution Type: Overhead									
Feeder		Branch		Town		Street		Time Off		Time On		Duration Hrs.		Min.		# Custs. Affected		Cust. Out. Hours		Rel. Min. Lost		Transformer Route/Pole/Suffix		Substation	
41-39L2		CA		LEBANON		POVERTY LANE RD		4:24		5:33		1		9		163		187		0.022		--		SLAYTON HILL 39	
41-39L2		CA		PLAINFIELD		POVERTY LANE RD		4:24		5:33		1		9		23		26		0.003		--			
Event Totals																123		141		0.017					
Event Description:		2 OF 3 BLOWN LINE FUSES POLE 19 POVERTY LN AT CAP RD - LARGE LIMB BETWEEN POLES 25-26 POVERTY LN PowerOn Order Id: 1118944-1																							
Prepared By: Maryann Hatch																									

Event Id: 7366024														District: Walpole											
Date: 06/29/2008														Feeder Outage: No		Distribution Type: Overhead									
Feeder		Branch		Town		Street		Time Off		Time On		Duration Hrs.		Min.		# Custs. Affected		Cust. Out. Hours		Rel. Min. Lost		Transformer Route/Pole/Suffix		Substation	
43-8L1		BAAAD		CHARLESTOWN		NORMAN AVE		6:30		7:40		1		10		1		1		0		0062-0004-00			
Event Totals																1		1		0					
Event Description:		box elder limb fell and took service down to house 10 fairbrother ave, charlestown, disconnected service to this house only to remove limb, reconnected PowerOn Order Id: 1118935-1																							
Prepared By: Carol Szemiot																									

Event Id: 7366042														District: Lebanon											
Date: 06/29/2008														Feeder Outage: Yes		Distribution Type: Overhead									
Feeder		Branch		Town		Street		Time Off		Time On		Duration Hrs.		Min.		# Custs. Affected		Cust. Out. Hours		Rel. Min. Lost		Transformer Route/Pole/Suffix		Substation	
41-16L1		A		HANOVER				8:55		9:12		0		17		37		10		0.001		--		WILDER 16 SWYD	
41-16L1		D		HANOVER		GREENSBORO RD		8:55		9:43		0		49		797		651		0.077		--			
41-16L1		D		LEBANON		GREENSBORO RD		8:55		9:43		0		49		1		1		0		--			
Event Totals																835		662		0.079					
Event Description:		16L1 station breaker lockout at mount support sub, lebanon and recloser lockout on p1 1/2 lebanon st, hanover - both locked open, closed in breaker at sub for partial restoration, removed tree limb from between p11 & p12 greensboro rd, closed in recloser. PowerOn Order Id: 1119054-1																							
Prepared By: Carol Szemiot																									

Event Id: 7366062				District: Salem									
Date: 06/29/2008				Feeder Outage: No				Distribution Type: Overhead					
Feeder		Branch	Town	Street	Time Off	Time On	Hrs.	Duration Min.	# Custs. Affected	Cust. Out. Hours	Rel. Min. Lost	Transformer Route/Pole/Suffix	Substation
42-18L2		GC	SALEM	SOUTH POLICY ST	10:02	11:20		1 19	12	16	0.002	--	OLDE TROLLEY 18
42-18L2		GCA	SALEM	PLAY CAMP RD	10:02	12:00		1 58	14	28	0.003	--	
Event Description: blown 25k line fuse at p8 south policy st and blown 15k line fuse at p2 play camp rd, replaced failed cutout at p2 play camp rd PowerOn Order Id: 1119082-1				Prepared By: Carol Szemiot									
Event Totals				26 43 0.005									

Event Id: 7366066				District: Lebanon									
Date: 06/29/2008				Feeder Outage: No				Distribution Type: Overhead					
Feeder		Branch	Town	Street	Time Off	Time On	Hrs.	Duration Min.	# Custs. Affected	Cust. Out. Hours	Rel. Min. Lost	Transformer Route/Pole/Suffix	Substation
41-1L2		BG	LEBANON	SCHOOL ST	10:32	13:16		2 44	12	33	0.004	--	LEBANON 1
									12	33	0.004		
Event Description: blown 15k line fuse at p16 school st and blown 10k transformer fuse at p4 messenger st, squirrel contact at p4 messenger st PowerOn Order Id: 1119089-1				Prepared By: Carol Szemiot									
Event Totals				12 33 0.004									

Event Id: 7366141				District: Salem									
Date: 06/29/2008				Feeder Outage: No				Distribution Type: Overhead					
Feeder		Branch	Town	Street	Time Off	Time On	Hrs.	Duration Min.	# Custs. Affected	Cust. Out. Hours	Rel. Min. Lost	Transformer Route/Pole/Suffix	Substation
42-10L1		AAA	SALEM	BARRON AVE	18:01	20:06		2 5	37	77	0.009	--	BARRON AVENUE 10
Event Description: BLOWN 40K LINE FUSE - P8 BARRON AVE / LIGHTNING STRIKE / PowerOn Order Id: 1119534-1				Prepared By: Kathleen Carboneau									
Event Totals				37 77 0.009									

Event Id: 7366166 District: Salem														
Distribution														
Type: Overhead														
Feeder		Branch	Town	Street	Time Off	Time On	Duration	Hrs.	Min.	# Custs. Affected	Cust. Out. Hours	Rel. Min. Lost	Transformer Route/Pole/Suffix	Substation
42-13L2		DAA	SALEM	ZION HILL RD	17:31	21:32	4		1	824	3310	0.393	--	SPICKET RIVER 13
42-13L2		DAA	WINDHAM	ZION HILL RD	17:31	21:32	4		1	42	169	0.02	--	
42-13L2		DAAAAAE	SALEM	EAST BROADWAY ST	17:31	00:59*	7		28	60	448	0.053	--	
Event Totals										925	3922	0.466		
Event Description:		POLE TOP RECLOSER LOCKOUT POLE 3 ZION HILL RD. TREE TOOK DOWN PRIMARY AND CROSS ARM POLE 4 EAST BROADWAY. ALSO FOUND A BLOWN FUSE AT POLE 24 EAST BROADWAY (LIMB NEAR POLE 14 ACKERMAN / CADDY DR). PowerOn Order Id: 1119480-1												
		Prepared By: Mary Beth Poirier												

Event Id: 7366173 District: Walpole														
Distribution														
Type: Overhead														
Feeder		Branch	Town	Street	Time Off	Time On	Duration	Hrs.	Min.	# Custs. Affected	Cust. Out. Hours	Rel. Min. Lost	Transformer Route/Pole/Suffix	Substation
43-12L2		A	SURRY		15:37	17:10	1		33	1	2	0	--	
43-12L2		A	WALPOLE		15:37	17:10	1		33	56	87	0.01	--	
43-12L2		D	SURRY	MAIN (0040) ST	15:37	20:48	5		11	30	156	0.018	--	
43-12L2		D	WALPOLE	MAIN (0040) ST	15:37	20:48	5		11	1066	5525	0.656	--	
43-12L2		A	SURRY		20:39	20:48	0		9	1	0	0	--	
43-12L2		A	WALPOLE		20:39	20:48	0		9	11	2	0	--	
Event Totals										1153	5778	0.686		
Event Description:		12L2 FEEDER LOCKED OUT AT VILAS BRIDGE SUB - TREES AND WIRES DOWN IN SEVERAL LOCATIONS ON BELLOWS FALLS RD. OPENED DISCONNECTS AT POLE 111 RTE 12, CLOSED BREAKER AT SUB. WHEN REPAIRS WERE COMPLETE, OPENED BREAKER AT SUB, CLOSED DISCONNECTS DEAD, CLOSED BREAKER AT SUB. PowerOn Order Id: 1119172-1												
		Prepared By: Kim M. St Andre												

Event Id: 7366174 District: Salem														
Distribution														
Type: Overhead														
Feeder		Branch	Town	Street	Time Off	Time On	Duration	Hrs.	Min.	# Custs. Affected	Cust. Out. Hours	Rel. Min. Lost	Transformer Route/Pole/Suffix	Substation
42-14L2		FB	PELHAM	NASHUA RD	17:29	21:51	4		21	48	209	0.025	--	PELHAM 14
42-14L2		F	PELHAM	NASHUA RD	20:20	20:33	0		13	223	48	0.006	--	
Event Totals										271	261	0.031		
Event Description:		BLOWN LINE FUSE POLE 33 NASHUA RD FAILED CUT OUT - BACKFED UP TO POLE 36 NASHUA RD THEN OPENED PTR POLE 5 NASHUA RD TO CUT CLEAR SAFELY. PowerOn Order Id: 1119452-1												
		Prepared By: Maryann Hatch												

Event Id: 7366181 District: Salem													
Date: 06/29/2008 Feeder Outage: No Distribution Type: Overhead													
Feeder	Branch	Town	Street	Time Off	Time On	Duration Hrs.	Min.	# Custs. Affected	Cust. Out. Hours	Rel. Min. Lost	Transformer Route/Pole/Suffix	Substation	
42-13L1	ED	SALEM	NORTH MAIN ST	17:54	22:07	4	12	47	197	0.023	--	SPICKET RIVER 13	
Event Totals								47	197	0.023			
Event Description: tree limb on primary at p3 evergreen rd, blown 40k line fuse at p85 north main st - removed limb PowerOn Order Id: 1119667-1				Prepared By: Carol Szemiot									

Event Id: 7366188 District: Salem													
Date: 06/29/2008 Feeder Outage: No Distribution Type: Overhead													
Feeder	Branch	Town	Street	Time Off	Time On	Duration Hrs.	Min.	# Custs. Affected	Cust. Out. Hours	Rel. Min. Lost	Transformer Route/Pole/Suffix	Substation	
42-9L3	LC	WINDHAM	RANGE ROAD	18:03	22:44	4	41	44	206	0.024	--	SALEM DEPOT 9	
Event Totals								44	206	0.024			
Event Description: tree down on primaries at p12 searles rd, Blown 15k line fuses at p26 range rd - removed tree - this area is wrong in Power On - has a loop in the circuit, so analyzing to wrong fuse. PowerOn Order Id: 1119539-1				Prepared By: Carol Szemiot									

Event Id: 7366189 District: Walpole													
Date: 06/29/2008 Feeder Outage: No Distribution Type: Overhead													
Feeder	Branch	Town	Street	Time Off	Time On	Duration Hrs.	Min.	# Custs. Affected	Cust. Out. Hours	Rel. Min. Lost	Transformer Route/Pole/Suffix	Substation	
43-12L2	HB	WALPOLE	PROSPECT HILL RD	21:21	22:30	1	9	42	48	0.006	--		
Event Totals								42	48	0.006			
Event Description: BLOWN LINE FUSE POLE 52 PROSPECT HILL RD- TREE FELL POLE 5 MAPLE GROVE RD PowerOn Order Id: 1119717-1				Prepared By: Maryann Hatch									

Event Id: 7366190 District: Salem													
Date: 06/29/2008 Feeder Outage: No Distribution Type: Overhead													
Feeder	Branch	Town	Street	Time Off	Time On	Duration Hrs.	Min.	# Custs. Affected	Cust. Out. Hours	Rel. Min. Lost	Transformer Route/Pole/Suffix	Substation	

Granite State Electric Company d/b/a National Grid
2008 Amended Annual Storm Fund Report
Exhibit 1

42-9L3	LB	WINDHAM	RANGE ROAD	17:39	22:47	5	8	88	452	0.054	--	SALEM DEPOT 9
Event Totals									88	452	0.054	
Event Description: p12 searles rd, tree down and blown line fuse at pole 26 range rd - this area is incorrect in Power On, there is a loop in the circuit. PowerOn Order Id: 1119481-1 See also IDS # 7366188 Prepared By: Mary Beth Poirier												

Event Id: 7366208 District: Salem Date: 06/29/2008 Feeder Outage: No Distribution Type: Overhead												
Feeder	Branch	Town	Street	Time Off	Time On	Duration Hrs.	Min.	# Custs. Affected	Cust. Out. Hours	Rel. Min. Lost	Transformer Route/Pole/Suffix	Substation
42-13L1	DA	SALEM	NORTH MAIN ST	17:57	23:09	5	11	208	1078	0.128	--	SPICKET RIVER 13
Event Totals									69	358	0.042	
Event Description: p10 fuse blown wheeler damn road; p52 north main fuse blown (1 of 3); p114 cove rd tree broke top of pole; pole 104 shore drive fuse open tree on secondary at number 11 clarke rd PowerOn Order Id: 1119754-1 Prepared By: Mary Beth Poirier												

Event Id: 7366209 District: Lebanon Date: 06/29/2008 Feeder Outage: No Distribution Type: Overhead												
Feeder	Branch	Town	Street	Time Off	Time On	Duration Hrs.	Min.	# Custs. Affected	Cust. Out. Hours	Rel. Min. Lost	Transformer Route/Pole/Suffix	Substation
41-39L2	CA	LEBANON	POVERTY LANE RD	20:26	23:38	3	13	163	524	0.062	--	SLAYTON HILL 39
41-39L2	CA	PLAINFIELD	POVERTY LANE RD	20:26	23:38	3	13	23	74	0.009	--	
Event Totals									186	598	0.071	
Event Description: 3 BLOWN LINE FUSES POLE 19 POVERTY LN- TREE LIMBS IN SEVERAL LOCATIONS PowerOn Order Id: 1119675-1 Prepared By: Maryann Hatch												

Event Id: 7366210 District: Lebanon													
Date: 06/29/2008 Feeder Outage: Yes Distribution Type: Overhead													
Feeder	Branch	Town	Street	Time Off	Time On	Duration Hrs.	Min.	# Custs. Affected	Cust. Out. Hours	Rel. Min. Lost	Transformer Route/Pole/Suffix	Substation	
41-1L3	A	LEBANON		11:08	12:27	1	19	1834	2415	0.287	--	LEBANON 1	
41-1L3	I	LEBANON	ETNA RD	11:08	20:29	9	21	6	56	0.007	0369-0042-00		
41-1L3	I	LEBANON	ETNA RD	11:08	20:29	9	21	1	9	0.001	0369-0039-00		
41-1L3	I	LEBANON	ETNA RD	11:08	20:29	9	21	5	47	0.006	0369-0037-00		
41-1L3	I	LEBANON	ETNA RD	11:08	13:12	2	4	39	81	0.009	--		
41-1L3	I	LEBANON	ETNA RD	20:01	20:29	0	27	8	4	0	--		
Event Totals								1895	2638	0.313			
Event Description:	the 1L3 feeder locked out at Lebanon Sub, tree fell on primaries at p37 etna rd, isolated via switching and also air gap created at p25 etna, removed tree, repaired line, re-opened loadbreak ta pole 8 Etna Rd, closed air gap PowerOn Order Id: 1119096-1 Prepared By: Carol Szemiot												

Event Id: 7366224 District: Salem													
Date: 06/29/2008 Feeder Outage: No Distribution Type: Overhead													
Feeder	Branch	Town	Street	Time Off	Time On	Duration Hrs.	Min.	# Custs. Affected	Cust. Out. Hours	Rel. Min. Lost	Transformer Route/Pole/Suffix	Substation	
42-13L1	DAA	SALEM	WHEELER DAM RD	17:51	00:02*	6	11	181	1119	0.133	--	SPICKET RIVER 13	
Event Totals								181	1119	0.133			
Event Description:	BLOWN LINE FUSE P10 COVE RD, TREE FELL PowerOn Order Id: 1119506-1 Prepared By: Carol Szemiot												

Event Id: 7366227 District: Walpole													
Date: 06/29/2008 Feeder Outage: No Distribution Type: Overhead													
Feeder	Branch	Town	Street	Time Off	Time On	Duration Hrs.	Min.	# Custs. Affected	Cust. Out. Hours	Rel. Min. Lost	Transformer Route/Pole/Suffix	Substation	
43-12L2	EAAC	WALPOLE	OLD NORTH MAIN ST	23:15	01:00*	1	44	1	2	0	--		
Event Totals								1	2	0			
Event Description:	BLOWN LINE FUSE POLE 20 OLD NORTH RD- TREE BETWEEN POLES 16-17 OLD NORTH RD PowerOn Order Id: 1119750-1 Prepared By: Maryann Hatch												

Event Id: 7366238			District: Salem			Distribution									
Date: 06/29/2008			Feeder Outage: No			Type: Overhead									
Feeder		Branch	Town	Street	Time Off	Time On	Hrs.	Duration	Min.	# Custs. Affected	Cust. Out. Hours	Rel. Min. Lost	Transformer Route/Pole/Suffix	Substation	
42-9L1		C	SALEM	OLD ROCKINGHAM RD	18:10	01:46*		7	36	16	122	0.014	0180-0010-00	SALEM DEPOT 9	
Event Totals										16	122	0.014			
Event Description:	blown transformer fuse at p10 old rockingham rd, replaced failed 50kva transformer - lightning PowerOn Order Id: 1119552-1		Prepared By: Carol Szemiot												

Event Id: 7366245				District: Salem				Distribution									
Date: 06/29/2008		Feeder Outage: No		Type: Overhead													
Feeder	Branch	Town	Street	Time Off	Time On	Hrs.	Min.	# Custs. Affected	Cust. Out. Hours	Rel. Min. Lost	Transformer Route/Pole/Suffix	Substation					
42-13L1	EC	SALEM	BLAKE RD	18:16	02:05*	7	48	1	8	0.001	0420-0008-00	SPICKET RIVER 13					
Event Totals								1	8	0.001							
Event Description:	tree took service wire down... 25 BLAKE RD		Prepared By: Mary Beth Poirier														
	PowerOn Order Id: 1119562-1																

Event Id: 7366246				District: Walpole				Distribution									
Date: 06/29/2008		Feeder Outage: No		Type: Overhead													
Feeder	Branch	Town	Street	Time Off	Time On	Duration		# Custs. Affected	Cust. Out. Hours	Rel. Min. Lost	Transformer Route/Pole/Suffix	Substation					
43-12L2	EJ	WALPOLE	SOUTH ST	21:35	01:30*	3	55	15	59	0.007	--						
						Event Totals		15	59	0.007							
Event Description: BLOWN LINE FUSES POLE 6 SOUTH ST- TREE FELL BETWEEN POLES 4-5 FORD AVE PowerOn Order Id: 1119720-1													Prepared By: Maryann Hatch				

Event Id: 7366255		District: Walpole		Distribution									
Date: 06/29/2008		Feeder Outage: No		Type: Overhead									
Feeder	Branch	Town	Street	Time Off	Time On	Hrs.	Duration	Min.	# Custs. Affected	Cust. Out. Hours	Rel. Min. Lost	Transformer Route/Pole/Suffix	Substation
43-12L1	DA	WALPOLE	VALLEY (0093) RD	15:40	23:50		8	11	32	262	0.031	--	
43-12L1	DAA	ALSTEAD	VALLEY (0096) RD	15:40	23:50		8	11	102	835	0.099	--	
43-12L1	DAA	WALPOLE	VALLEY (0096) RD	15:40	23:50		8	11	120	982	0.117	--	
Event Totals									254	2079	0.247		
Event Description: BLOWN LINE FUSE POLE 1 VALLEY RD- TREE AND WIRES DOWN POLE 36 VALLEY RD PowerOn Order Id: 1119157-1		Prepared By: Maryann Hatch											

Event Id: 7366265 District: Salem													
Date: 06/29/2008 Feeder Outage: No Distribution Type: Overhead													
Feeder	Branch	Town	Street	Time Off	Time On	Duration Hrs.	Min.	# Custs. Affected	Cust. Out. Hours	Rel. Min. Lost	Transformer Route/Pole/Suffix	Substation	
42-9L3	LACA	WINDHAM	INDIAN ROCK RD	21:50	04:34*	6	43	14	94	0.011	--	SALEM DEPOT 9	
Event Totals								14	94	0.011			
Event Description: p1-2, 1-3, 1-4 need replaced. need to reattach 336 service to bank, need electrician; replaced 50kva transformer...tree - tstorms - see order #1119483-1 PowerOn Order Id: 1119881-1 Prepared By: Richard J. Bodo													

Event Id: 7366276 District: Walpole													
Date: 06/29/2008 Feeder Outage: No Distribution Type: Overhead													
Feeder	Branch	Town	Street	Time Off	Time On	Duration Hrs.	Min.	# Custs. Affected	Cust. Out. Hours	Rel. Min. Lost	Transformer Route/Pole/Suffix	Substation	
43-12L1	EBBA	ALSTEAD	SUNSET CIR	19:48	05:00*	9	12	5	46	0.005	0066-0003-00		
Event Totals								5	46	0.005			
Event Description: BLOWN TRANSFORMER FUSE POLE 3 SUNSET CIR-St Andre TREE PowerOn Order Id: 1119649-1 Prepared By: Kim M.													

Event Id: 7366278 District: Walpole													
Date: 06/29/2008 Feeder Outage: No Distribution Type: Overhead													
Feeder	Branch	Town	Street	Time Off	Time On	Duration Hrs.	Min.	# Custs. Affected	Cust. Out. Hours	Rel. Min. Lost	Transformer Route/Pole/Suffix	Substation	
43-12L1	FGB	ALSTEAD	DARBY BROOK RD	17:44	20:30	2	46	1	3	0	0061-0002-00		
Event Totals								1	3	0			
Event Description: BLOWN TRANSFORMER FUSE POLE 2 DARBY BROOK RD- TREE PowerOn Order Id: 1119485-1 Prepared By: Kim M. St Andre													

Event Id: 7366285 District: Walpole													
Date: 06/29/2008 Feeder Outage: No Distribution Type: Overhead													
Feeder	Branch	Town	Street	Time Off	Time On	Duration Hrs.	Min.	# Custs. Affected	Cust. Out. Hours	Rel. Min. Lost	Transformer Route/Pole/Suffix	Substation	
43-12L2	EBC	WALPOLE	OLD KEENE RD	21:22	06:00*	8	38	38	328	0.039	--		
Event Totals								38	328	0.039			
Event Description: BLOWN LINE FUSE POLE 4 OLD KEENE RD - SEVERAL TREES AND WIRES DOWN PowerOn Order Id: 1119719-1 Prepared By: Kim M. St Andre													

Event Id: 7366286 District: Walpole													
Date: 06/29/2008		Feeder Outage: No		Distribution Type: Overhead									
Feeder	Branch	Town	Street	Time Off	Time On	Duration Hrs.	Min.	# Custs. Affected	Cust. Out. Hours	Rel. Min. Lost	Transformer Route/Pole/Suffix	Substation	
43-12L2	EAAAAA	WALPOLE	OLD DREWSVILLE RD	21:56	02:00*	4	4	2	8	0.001	0083-0029-00		
Event Totals								2	8	0.001			
Event Description: BLOWN TRANSFORMER FUSE POLE 29 OLD DREWSVILLE RD- LIGHTNING PowerOn Order Id: 1119728-1		Prepared By: Kim M. St Andre											

Event Id: 7366290 District: Walpole													
Date: 06/29/2008		Feeder Outage: No		Distribution Type: Overhead									
Feeder	Branch	Town	Street	Time Off	Time On	Duration Hrs.	Min.	# Custs. Affected	Cust. Out. Hours	Rel. Min. Lost	Transformer Route/Pole/Suffix	Substation	
43-12L1	EBA	ALSTEAD	COOK HILL RD	16:13	06:25*	14	13	12	171	0.02	--		
Event Totals								12	171	0.02			
Event Description: BLOWN LINE FUSE POLE 1 COOK HILL RD AT DREWSVILLE - TREE TOOK LINES DOWN POLE 4-5 COOK HILL RD PowerOn Order Id: 1119308-1		Prepared By: Kim M. St Andre											

Event Id: 7366342 District: Walpole													
Date: 06/29/2008		Feeder Outage: No		Distribution Type: Overhead									
Feeder	Branch	Town	Street	Time Off	Time On	Duration Hrs.	Min.	# Custs. Affected	Cust. Out. Hours	Rel. Min. Lost	Transformer Route/Pole/Suffix	Substation	
43-12L2	EBA	WALPOLE	OLD KEENE RD	21:58	10:25*	12	27	3	37	0.004	0050-0085-00		
Event Totals								3	37	0.004			
Event Description: Blown transformer fuse - pole 85 - lightning PowerOn Order Id: 1119729-1		Prepared By: Kim M. St Andre											

Event Id: 7366456 District: Walpole													
Date: 06/29/2008		Feeder Outage: No		Distribution Type: Overhead									
Feeder	Branch	Town	Street	Time Off	Time On	Duration Hrs.	Min.	# Custs. Affected	Cust. Out. Hours	Rel. Min. Lost	Transformer Route/Pole/Suffix	Substation	
43-12L1	IBI	ALSTEAD	GILSUM MINE RD	16:25	17:02*	24	37	1	25	0.003	--		
Event Totals								1	25	0.003			
Event Description: TREE CREW REMOVED TREE - svc wire replaced PowerOn Order Id: 1119324-1		Prepared By: Kim M. St Andre											

Event Id: 7366458 District: Walpole													
Date: 06/29/2008		Feeder Outage: No		Distribution Type: Overhead									
Feeder	Branch	Town	Street	Time Off	Time On	Duration Hrs.	Min.	# Custs. Affected	Cust. Out. Hours	Rel. Min. Lost	Transformer Route/Pole/Suffix	Substation	
43-12L1	DAAD	WALPOLE	VALLEY (0096) RD	15:37	16:52*	25	15	7	177	0.021	--		
Event Totals								7	177	0.021			

Event Description: J-136 Transmission line came down under large tree knocking out distribution circuit below - blown line fuse pole 45 Valley Rd. See also IDS event #7366098 . PowerOn Order Id: 1119950-1														Prepared By: Richard J. Bodo													
Event Id: 7366488														District: Salem													
Date: 06/29/2008														Feeder Outage: No													
Feeder														Distribution													
Branch														Type: Overhead													
Town														Street													
Time Off														Time On													
Hrs.														Duration													
Min.														# Custs. Affected													
Cust. Out. Hours														Rel. Min. Lost													
Transformer Route/Pole/Suffix														Substation													
42-13L2														DAAAB													
SALEM														SHADOW LAKE RD													
21:49														12:00*													
14														11													
12														170													
0.02														0339-0049-00													
SPICKET RIVER 13														Event Totals													
12														170													
0.02																											
Event Description: Blown transformer fuse - need crew to reconnect secondary btwn pole 50 and 50-2 and service btwn 50-1 and 50-2. Tree fell on pole 50-2. broke pole and secondary - crew did not clear call PowerOn Order Id: 1119726-1														Prepared By: Richard J. Bodo													

Event Id: 7366668														District: Salem													
Date: 06/29/2008														Feeder Outage: No													
Feeder														Distribution													
Branch														Type: Overhead													
Town														Street													
Time Off														Time On													
Hrs.														Duration													
Min.														# Custs. Affected													
Cust. Out. Hours														Rel. Min. Lost													
Transformer Route/Pole/Suffix														Substation													
42-9L3														LACA													
WINDHAM														INDIAN ROCK RD													
17:43														04:34*													
10														51													
12														130													
0.015														--													
SALEM DEPOT 9														42-9L3													
LACA														WINDHAM													
INDIAN ROCK RD														4:35													
16:00														11													
24														12													
137														0.016													
--														42-9L3													
LACA														WINDHAM													
INDIAN ROCK 2 ST														4:35													
21:40*														41													
4														1													
41														0.005													
0020-0003-00														Event Totals													
15														255													
0.03																											
Event Description: p1-2, 1-3, 1-4 needed to be replaced by telco needed to reattach 336 service to bank, needed electrician; replaced 50kva transformer. fresh crew to finish work in the AM; ran 3 sections of primary and put up 1 svc back on pole. 2 poles with transformer down still at p3-- oil spill, waited for clean harbors to test and clean up; PowerOn Order Id: 1119483-1														Prepared By: Richard J. Bodo													

EVNT_ID	Fdrs	Tim-off	Weath	Caus	RprCrw	Cls	Cl	Dur	
1	7366014	41-39L2	06/29/2008 4:24:19 AM	Fair	Tree - Broken Limb	Unintentional	Fused branch - overhead	123	68
2	7366024	43-8L1	06/29/2008 6:30:18 AM	Rain - light / moderate	Tree - Broken Limb	Unintentional	Secondary/Service - overhead	1	70
3	7366042	41-16L1	06/29/2008 8:55:07 AM		Tree - Broken Limb	Unintentional	Main line - overhead	835	48
4	7366062	42-18L2	06/29/2008 10:02:02 AM	Rain - light / moderate	Deterioration	Unintentional	Fused branch - overhead	26	118
5	7366066	41-1L2	06/29/2008 10:32:55 AM	Rain - light / moderate	Animal	Unintentional	Fused branch - overhead	12	164
6	7366210	41-1L3	06/29/2008 11:08:31 AM		Rain - heavy	Tree Fell	Unintentional	Main line - overhead	1895
7	7366458	43-12L1	06/29/2008 3:37:00 PM	Rain - heavy	Tree Fell	Unintentional	Fused branch - overhead	7	1515
8	7366173	43-12L2	06/29/2008 3:37:26 PM	Rain - heavy	Tree Fell	Unintentional	Main line - overhead	1153	311
9	7366255	43-12L1	06/29/2008 3:40:21 PM	Rain - heavy	Tree Fell	Unintentional	Fused branch - overhead	254	490
10	7366290	43-12L1	06/29/2008 4:13:00 PM	Rain - heavy	Tree Fell	Unintentional	Fused branch - overhead	12	852
11	7366456	43-12L1	06/29/2008 4:25:40 PM	Rain - heavy	Tree Fell	Unintentional	Secondary/Service - overhead	1	1476
12	7366174	42-14L2	06/29/2008 5:29:50 PM	Rain - heavy	Deterioration	Unintentional	Fused branch - overhead	271	261
13	7366166	42-13L2	06/29/2008 5:31:12 PM	Rain - heavy	Tree Fell	Unintentional	Main line - overhead	925	448
14	7366190	42-9L3	06/29/2008 5:39:28 PM	Rain - heavy	Tree Fell	Unintentional	Fused branch - overhead	88	307
15	7366668	42-9L3	06/29/2008 5:43:10 PM	Rain - heavy	Tree Fell	Unintentional	Fused branch - overhead	15	3117
16	7366278	43-12L1	06/29/2008 5:44:44 PM	Rain - heavy	Tree Fell	Unintentional	Transformer	1	166
17	7366224	42-13L1	06/29/2008 5:51:12 PM	Rain - heavy	Tree Fell	Unintentional	Fused branch - overhead	181	371
18	7366181	42-13L1	06/29/2008 5:54:51 PM	Rain - heavy	Tree - Broken Limb	Unintentional	Fused branch - overhead	47	252
19	7366208	42-13L1	06/29/2008 5:57:45 PM	Rain - heavy	Tree - Broken Limb	Unintentional	Fused branch - overhead	69	311
20	7366141	42-10L1	06/29/2008 6:01:48 PM	Rain - heavy	Lightning	Unintentional	Fused branch - overhead	37	125
21	7366188	42-9L3	06/29/2008 6:03:13 PM	Rain - heavy	Tree Fell	Unintentional	Fused branch - overhead	44	280
22	7366238	42-9L1	06/29/2008 6:10:19 PM	Rain - heavy	Lightning	Unintentional	Transformer	16	456
23	7366245	42-13L1	06/29/2008 6:16:51 PM	Rain - heavy	Tree - Broken Limb	Unintentional	Secondary/Service - overhead	1	468
24	7366276	43-12L1	06/29/2008 7:48:23 PM	Rain - heavy	Tree Fell	Unintentional	Transformer	5	551
25	7366209	41-39L2	06/29/2008 8:26:13 PM	Rain - heavy	Tree - Broken Limb	Unintentional	Fused branch - overhead	186	192
26	7366189	43-12L2	06/29/2008 9:21:52 PM	Rain - heavy	Tree Fell	Unintentional	Fused branch - overhead	42	69
27	7366285	43-12L2	06/29/2008 9:22:18 PM	Rain - heavy	Tree Fell	Unintentional	Fused branch - overhead	38	517
28	7366246	43-12L2	06/29/2008 9:35:46 PM	Rain - heavy	Tree Fell	Unintentional	Fused branch - overhead	15	234
29	7366488	42-13L2	06/29/2008 9:49:37 PM	Rain - heavy	Tree Fell	Unintentional	Secondary/Service - overhead	12	851
30	7366265	42-9L3	06/29/2008 9:50:49 PM	Rain - heavy	Tree Fell	Unintentional	Fused branch - overhead	14	403
31	7366286	43-12L2	06/29/2008 9:56:29 PM	Rain - heavy	Lightning	Unintentional	Transformer	2	243
32	7366342	43-12L2	06/29/2008 9:58:33 PM	Rain - heavy	Lightning	Unintentional	Transformer	3	747
33	7366227	43-12L2	06/29/2008 11:15:34 PM	Rain - heavy	Tree Fell	Unintentional	Fused branch - overhead	1	104

6332

December 2008 Ice Storm
Circuit and Damage Information

Circuit Information			Damage					
Circuit ID Number	Circuit Voltage Level	No. of customers without power	No. of primary spans down	No. of secondary spans down	No. of services down	No. of broken poles or structures	No. of damaged transformers	Other Equip. as needed
1L3	13.2kV	1899	5	1	2	0	0	(2) Crossarms
12L1	13.2kV	1577	8	0	3	4	1	(4) Crossarms
12L2	13.2kV	964	41	4	6	9	2	(19) Crossarms
8L1	13.2kV	1388	4	0	1	1	1	(1) Crossarm
8L2	13.2kV	1						
18L3	13.2kV	674	0	0	0	0	0	
18L4	13.2kV	512	3	0	1	0	0	(2) Crossarms
9L1	13.2kV	808	4	4	14	2	0	(3) Pole Top Pins ; (60) Crossarms; (2) Guys ; (2) Street Lights
9L3	13.2kV	1919	21	15	3	8	5	(15) Pole Top Pins ; (6) Crossarms ; (1) Line Cutout ; (3) Transformer Cutouts ; (2) Arrestors
10L4	13.2kV	1199	3	0	21	2	0	(1) Cutout
14L1	13.2kV	1646	9	1	16	3	0	(1) Pole Top Pin ; (1) Crossarm ; (1) Insulator ; (3) Cutouts
14L2	13.2kV	1706	17	4	9	4	1	(7) Crossarms ; (2) Cutouts, (3) Guys ; (1) Street Light ; (2) Floodlights ; (1) Anchor
14L3	13.2kV	1937	14	0	19	7	5	(10) Pole Top Pins; (7) Crossarms; (1) Guy ; (1) Street Light ; (3) Line Cutouts ; (2) Transformer Cutouts; (30) Arrestors
13L1	13.2kV	1563	9	3	14	4	1	(9) Pole Top Pins ; (2) Anchors ; (4) Crossarms ; (2) Guys ; (3) Transformer Cutouts ; (1) Arrestor ; (1) Street Light ; (1) Bracket
13L2	13.2kV	2913	11	4	7	4	2	(1) Pole Top Pin ; (8) Crossarms ; (3) Line Cutouts; (3) Transformer Cutouts ; (1) Guy ; (1) Anchor

Circuit Information			Damage					
13L1PTR p. 34 N. Main	13.2kV	1507						Part of 13L1 Damages
1L2PTR p. 18 School	13.2kV	949	17	0	2	0	0	(8) Crossarms
10L2PTR p. 9 Cluff	13.2kV	1699	2	0	18	0	0	(1) Cutout
14L3PTR p. 46 Windham	13.2kV	388						Part of 14L3 Damage
16L1PTR p. 15 Greensboro	13.2kV	1085	16	0	1	1	0	(8) Crossarms
18L2PTR p. 10 Vet. Mem	13.2kV	634	4	1	4	0	0	(4) Crossarms : (1) Cutout

Customer Interruptions

December 2008 Ice Storm

December 11, 2008

Feeder	Branch	Town	Street	Time Off	Time On	Duration		Customers Affected
						Hours	Minutes	
42-9L3	KAAAA	WINDHAM	ROCKINGHAM RD	16:30	16:30	0	0	275
42-9L3	GA	SALEM	NORTH POLICY ST	17:22	18:47*	121	25	1
42-13L1	D	DERRY	NORTH MAIN ST	20:56	21:47	0	51	114
42-13L1	D	SALEM	NORTH MAIN ST	20:56	21:47	0	51	1424
42-10L4	GAA	SALEM	WHEELER AVE	21:36	22:30	0	54	38
42-13L1	DA	SALEM	WHEELER DAM RD	21:52	17:11*	139	19	1
43-12L1	FH	LANGDON	ACWORTH RD	21:53	01:18*	3	25	2
42-13L1	GA	SALEM	NORTH MAIN ST	21:53	19:51*	117	57	31
42-9L3	J	SALEM	NORTH POLICY ST	22:03	17:33*	43	30	10
42-9L3	J	WINDHAM	NORTH POLICY ST	22:03	17:33*	43	30	4
42-9L3	L	WINDHAM	RANGE ROAD	22:03	04:57*	54	54	391
42-9L3	KAAAA	WINDHAM	ROCKINGHAM RD	22:03	08:18*	82	15	550
42-9L3	KA	SALEM	RANGE RD	22:03	05:06*	55	4	197
42-9L3	KA	WINDHAM	RANGE RD	22:03	05:06*	55	4	97
42-9L3	KB	WINDHAM	NORTH POLICY ST	22:03	16:25*	90	22	12
42-9L3	KAAAA	WINDHAM	ROCKINGHAM RD	22:03	22:03	0	0	550
42-9L3	LB	WINDHAM	RANGE ROAD	22:03	05:08*	55	5	88
42-14L3	G	PELHAM	WINDHAM RD	22:18	00:05*	1	47	377
42-14L3	G	WINDHAM	WINDHAM RD	22:18	00:05*	1	47	145
42-9L3	HB	SALEM	WEST DUSTON DR	22:28	18:08*	115	41	40
42-13L1	DA	SALEM	NORTH MAIN ST	22:32	17:37*	43	5	56
42-10L2	JA	SALEM	SCHOOL ST	22:37	21:16*	46	39	110
42-10L2	JA	SALEM	SCHOOL ST	22:37	20:25*	45	48	110
42-14L3	BAAAD	PELHAM	GAGE HILL RD	22:50	18:50*	116	0	54
42-13L1	KC	DERRY	ROUTE 111 RD	22:51	17:41*	66	50	1
42-18L2	GD	SALEM	SOUTH POLICY ST	23:04	17:37*	42	33	50
42-14L3	BAAAD	PELHAM	VASSAR DR	23:06	16:26*	161	20	4
42-14L1	G	DRACUT	BRIDGE ST	23:09	02:46*	27	37	2
42-14L1	G	PELHAM	BRIDGE ST	23:09	02:46*	27	37	510
42-14L1	A	PELHAM		23:09	20:26*	45	17	673

42-14L1	E	PELHAM	BRIDGE ST	23:09	22:36*	23	27	201
42-14L1	EA	PELHAM	WILLOW ST	23:09	23:16*	48	7	310
42-14L1	DA	PELHAM	OLD BRIDGE NO ST	23:09	00:02*	48	53	24
42-14L2	F	PELHAM	NASHUA RD	23:09	18:42*	67	33	782
42-14L2	I	PELHAM	MAMMOTH RD	23:09	14:14*	87	5	71
42-13L2	DAAABH	SALEM	HITTY RD	23:37	23:48	0	11	14
42-9L3	L	WINDHAM	RANGE ROAD	23:37	12:34*	60	56	479
42-9L3	KA	SALEM	RANGE RD	23:37	03:48*	52	10	197
42-9L3	KA	WINDHAM	RANGE RD	23:37	03:48*	52	10	372
42-9L3	HA	SALEM	PUMPING STATION RD	23:37	03:30*	51	52	122
42-9L3	A	SALEM		23:37	16:33*	16	56	554
42-9L3	A	WINDHAM		23:37	16:33*	16	56	12
42-9L3	G	SALEM	NORTH POLICY ST	23:37	16:17*	40	40	167
42-9L3	G	WINDHAM	NORTH POLICY ST	23:37	16:17*	40	40	16
42-9L3	HAA	SALEM	OLD ROCKINGHAM RD	23:41	18:55*	91	14	77
42-9L3	HAAA	SALEM	DENNIS DR	23:41	18:59*	91	18	25
42-9L3	H	SALEM	NORTH POLICY ST	23:42	16:24*	112	41	7
42-9L3	FAAB	SALEM	BROOKDALE RD	23:47	19:10*	91	22	76
42-9L3	FAAB	WINDHAM	BROOKDALE RD	23:47	19:10*	91	22	12
42-13L2	DAAAAAB	PELHAM	SHORE DR	23:48	13:22*	85	34	3
42-13L2	DAAAAAB	SALEM	SHORE DR	23:48	13:22*	85	34	252
42-9L3	HD	SALEM	PUMPING STATION RD	23:48	02:35*	98	48	15
42-13L2	DAAAAAA	SALEM	EAST BROADWAY ST	23:48	14:39*	110	51	84
42-10L2	G	SALEM	CLUFF RD	23:49	13:50*	38	0	1291
42-9L3	FAAA	SALEM	BROOKDALE RD	23:50	05:47*	101	57	77
42-9L3	FC	SALEM	NORTH POLICY ST	23:50	06:03*	102	13	81
9L3	FD	SALEM	NORTH POLICY ST	23:51	22:53*	95	2	61
42-13L1	EA	SALEM	ATKINSON RD	23:54	15:32*	63	38	224
42-13L1	JAC	DERRY	ERMER RD	23:58	17:21*	65	23	69
42-13L1	JAC	SALEM	ERMER RD	23:58	17:21*	65	23	3
42-14L3	BAAAE	PELHAM	ORCHARD LN	23:59	12:02*	108	3	20

Note:

* means the Time On occurred on a date separate of the Time Off

Customer Interruptions

December 2008 Ice Storm

December 12, 2008

Feeder	Branch	Town	Street	Time Off	Time On	Duration		Customers Affected
						Hours	Minutes	
42-9L3	C	SALEM	W MAIN ST	00:09	01:23*	121	14	21
42-14L2	FCC	PELHAM	PARTRIDGEBERRY LN	00:12	20:30*	116	18	7
42-14L2	FB	PELHAM	NASHUA RD	00:14	11:41*	107	27	49
42-14L2	FC	PELHAM	NASHUA RD	00:14	13:56*	109	42	102
42-14L2	GAEE	PELHAM	MAMMOTH RD	00:19	01:44*	97	25	13
42-14L2	GAAC	PELHAM	MAMMOTH RD	00:23	18:43*	114	19	41
42-14L3	EAA	PELHAM	WINDHAM RD	00:24	00:24	0	0	136
42-13L1	JA	SALEM	ERMER RD	00:24	17:18*	64	54	123
42-14L2	I	PELHAM	MAMMOTH RD	00:25	20:27*	116	2	8
42-13L1	DAA	SALEM	WHEELER DAM RD	00:26	16:39*	64	14	181
42-10L2	BAI	SALEM	KELLY RD	00:32	06:35*	54	3	41
42-14L3	BAAAD	PELHAM	GAGE HILL RD	00:32	16:26	15	53	4
42-10L4	A	SALEM		00:34	13:24	12	50	1199
42-14L2	BAA	PELHAM	OLD GAGE HILL SO RD	00:35	20:24*	115	49	17
42-14L2	FD	PELHAM	NASHUA RD	00:44	11:39*	106	55	28
42-18L4	CAAAAAA	SALEM	STILES RD	00:45	03:57*	75	12	22
42-14L3	BB	PELHAM	GAGE HILL RD	00:46	13:11*	108	25	41
42-13L1	JC	SALEM	NORTH MAIN ST	00:49	03:40*	98	50	50
42-9L3	BAA	SALEM	CORNWELL CT	00:51	12:05*	83	14	11
42-14L3	GA	PELHAM	WINDHAM RD	01:09	20:49*	115	40	78
42-14L3	BAA	PELHAM	GAGE HILL RD	01:09	23:26*	46	16	710
42-14L3	BAA	SALEM	GAGE HILL RD	01:09	23:26*	46	16	176
42-18L2	L	SALEM	VETERANS MEMORIAL	01:15	16:18	15	3	634
41-6L3	AB	HANOVER	THOMPSON TER	01:18	01:18	0	0	6
43-12L2	E	WALPOLE	MAIN (0040) ST	01:34	20:14	18	39	480
43-12L2	F	SURRY	PROSPECT HILL RD	01:34	12:00*	34	25	29
43-12L2	F	WALPOLE	PROSPECT HILL RD	01:34	12:00*	34	25	354
43-12L2	A	SURRY		01:34	02:39	1	4	1
43-12L2	A	WALPOLE		01:34	02:39	1	4	17
43-12L2	A	WALPOLE		01:35	02:34	0	59	101

43-12L2	EB	WALPOLE	HUBBARD ST	01:35	19:20	17	45	32
43-12L2	G	WALPOLE	PROSPECT HILL RD	01:35	11:50*	34	16	353
43-12L2	EBA	WALPOLE	WENTWORTH RD	01:35	00:35*	47	1	102
43-12L2	MC	SURRY		01:35	21:38*	68	3	18
43-12L2	MC	WALPOLE		01:35	21:38*	68	3	1
43-12L2	E	WALPOLE	MAIN (0040) ST	01:35	20:02	18	28	240
43-12L2	EBC	WALPOLE	OLD KEENE RD	01:35	23:53*	46	19	35
43-12L2	MCA	SURRY	SURRY RD	01:35	20:35*	91	0	10
43-12L2	EBB	WALPOLE	WENTWORTH RD	01:35	01:40*	48	5	71
42-18L3	A	SALEM		01:47	13:29	11	42	265
42-18L3	E	SALEM	FAIRMONT RD	01:47	14:05	12	18	406
42-18L4	GC	SALEM	BROOKDALE RD	01:47	09:24*	31	37	100
42-18L4	GC	WINDHAM	BROOKDALE RD	01:47	09:24*	31	37	1
42-9L1	A	SALEM		01:54	11:05	9	11	394
42-9L1	C	SALEM	NORTH BROADWAY	01:54	20:17	18	23	446
42-13L1	C	SALEM	BLUFF ST EXT	01:56	19:51*	113	55	6
41-6L3	AB	HANOVER	THOMPSON TER	02:04	02:31	0	27	6
42-14L2	CAAA	PELHAM	BURNS RD	02:18	22:16*	67	58	606
42-14L2	CAAA	SALEM	BURNS RD	02:18	22:16*	67	58	1
42-13L1	F	SALEM	NORTH MAIN ST	02:30	19:49*	113	18	9
42-13L1	FAA	SALEM	ARLINGTON POND CT	02:31	17:00*	110	30	46
42-13L2	H	SALEM	SCHOOL ST	02:43	20:49	18	6	298
41-1L2	BAAAA	CORNISH	MERIDEN RD	02:45	13:24	10	40	110
41-1L2	BAAAA	ENFIELD	MERIDEN RD	02:45	13:24	10	40	63
41-1L2	BAAAA	LEBANON	MERIDEN RD	02:45	13:24	10	40	36
41-1L2	BAAAA	PLAINFIELD	MERIDEN RD	02:45	13:24	10	40	404
41-1L2	BAA	LEBANON	SCHOOL ST	02:45	10:53	8	8	336
42-14L3	EC	PELHAM	INCINERATOR RD	02:45	20:00*	89	15	5
42-14L3	G	PELHAM	WINDHAM RD	02:46	19:14*	64	28	377
42-14L3	G	WINDHAM	WINDHAM RD	02:46	19:14*	64	28	145
41-6L3	DAAAAA	HANOVER	VERONA AVE	02:51	19:27	16	36	182
43-8L1	BA	CHARLESTOWN	LOWER LANDING RD	02:51	02:51	0	0	291
41-1L2	BAA	LEBANON	SCHOOL ST	02:52	12:14	9	22	338
41-1L2	AA	LEBANON	SLAYTON HILL RD	02:54	21:05	18	11	110
42-18L4	EAA	SALEM	GOLDEN OAKS DR	02:54	16:33	13	39	7
42-13L1	C	SALEM	NORTH MAIN ST	03:09	19:52*	112	43	1
42-14L3	C	PELHAM	HOBBS RD	03:19	18:29*	63	11	471

42-14L3	DA	PELHAM	HOBBS RD	03:21	20:27*	113	7	61
42-10L1	AA	SALEM	BARRON AVE	03:23	20:30*	41	6	72
41-16L1	I	HANOVER	HANOVER CENTER RD	03:23	17:14*	61	50	190
41-16L1	FA	HANOVER	GREAT HOLLOW RD	03:23	08:15	4	51	12
41-16L1	F	HANOVER	GREENSBORO RD	03:23	07:46	4	23	542
41-16L1	G	HANOVER	HANOVER CENTER RD	03:23	11:54	8	31	561
41-1L2	BBA	LEBANON	PROSPECT ST	03:29	18:48*	111	18	1
42-10L2	BA	SALEM	KELLY RD	03:29	19:58*	112	28	1
43-12L1	A	ACWORTH		03:35	13:01	9	25	163
43-12L1	A	ALSTEAD		03:35	13:01	9	25	845
43-12L1	A	LANGDON		03:35	13:01	9	25	233
43-12L1	A	MARLOW		03:35	13:01	9	25	4
43-12L1	A	WALPOLE		03:35	13:01	9	25	717
43-8L1	A	CHARLESTOWN		03:35	09:35	6	0	1140
43-8L1	CA	CHARLESTOWN	MAIN ST	03:35	10:30	6	54	248
43-12L2	A	SURRY		03:35	11:24	7	48	3
43-12L2	A	WALPOLE		03:35	11:24	7	48	98
42-14L2	HA	PELHAM	MAMMOTH RD	03:38	19:22*	87	44	119
43-12L1	FBAC	ACWORTH	OLD CEMETARY RD	03:47	10:02	6	15	1
42-14L3	IA	PELHAM	MAMMOTH RD	03:53	17:45*	109	52	56
41-16L1	EC	HANOVER	BERRILL FARM LN	03:57	17:14*	61	16	1
41-1L3	F	LEBANON	OLD ETNA RD	04:00	06:19	2	20	76
42-18L4	BD	SALEM	TROLLEY LN	04:02	16:59*	36	57	8
41-16L1	DC	HANOVER	COLLEGE HILL RD	04:05	07:30	3	24	1
41-1L2	LAAAAB	ENFIELD	WHALEBACK	04:08	12:53*	56	44	12
41-1L2	LAAAABAA	ENFIELD	OLD RTE> 10 RD	04:08	12:54*	56	45	4
41-1L2	LAAAABAB	ENFIELD	OLD RTE> 10 RD	04:08	12:54*	56	46	8
42-14L3	EAB	PELHAM	WINDHAM RD	04:08	13:04*	104	56	37
41-11L1	AD	LEBANON	SEMINARY HILL RD	04:09	15:30	11	21	72
41-39L2	M	LEBANON	PLAINFIELD RD	04:11	17:38	13	27	9
41-39L2	M	PLAINFIELD	PLAINFIELD RD	04:11	17:38	13	27	89
41-39L2	KAAD	PLAINFIELD	PLAINFIELD RD	04:11	17:44	13	33	21
41-1L3	A	LEBANON		04:14	06:07	1	53	1822
41-6L3	AAA	HANOVER	WEST LEBANON RD	04:14	21:24	17	10	24
41-6L3	AAA	LEBANON	WEST LEBANON RD	04:14	21:24	17	10	8
41-6L3	AAAAA	HANOVER	HILLTOP DR	04:14	21:24	17	10	9
41-6L3	AAAAA	LEBANON	HILLTOP DR	04:14	21:24	17	10	6

42-9L3	GB	SALEM	NORTH POLICY ST	04:15	02:26*	94	11	31
41-6L3	AADA	LEBANON	OAKRIDGE DR	04:20	23:22	19	3	45
41-6L3	AA	HANOVER	WEST LEBANON RD	04:21	14:02	9	41	13
41-6L3	AA	LEBANON	WEST LEBANON RD	04:21	14:02	9	41	442
42-18L4	G	PELHAM	BRADY AVE	04:23	13:07*	32	44	1
42-18L4	G	SALEM	BRADY AVE	04:23	13:07*	32	44	351
42-18L4	G	WINDHAM	BRADY AVE	04:23	13:07*	32	44	1
41-1L2	BBB	LEBANON	PERLEY AVE	04:24	21:00	16	35	1
42-9L3	KAAAAAB	WINDHAM	LAMPLIGHTER	04:24	09:53*	125	29	1
42-9L3	LB	WINDHAM	GOVERNOR	04:24	09:53*	125	29	1
42-9L3	LBI	WINDHAM	SEARLES RD	04:24	09:53*	125	29	1
14-58L2	ICA	CHELMSFORD	MASON AVE	04:24	09:53*	125	29	1
42-9L3	KAAAAC	WINDHAM	ALADDIN DR	04:24	09:53*	125	29	1
42-9L3	LBH	WINDHAM	SEARLES RD	04:24	09:53*	125	29	1
41-39L2	KBAD	LEBANON	TRUES BROOK RD	04:26	12:08*	31	42	8
41-39L2	KBAD	PLAINFIELD	TRUES BROOK RD	04:26	12:08*	31	42	13
43-12L1	AAAAAC	WALPOLE	RIVER RD	04:48	13:12	8	24	59
41-6L3	DAAAAC	HANOVER	VALLEY RD	04:51	04:39*	23	47	65
42-13L1	C	SALEM	NORTH MAIN ST	04:56	09:05*	124	10	8
42-13L1	FA	SALEM	ARLINGTON POND CT	04:58	19:42*	110	44	10
42-9L3	LAAB	WINDHAM	RANGE ROAD	04:59	06:11	1	12	164
41-6L3	IAC	HANOVER	LYME RD	05:06	17:32	12	26	206
42-14L2	CAG	PELHAM	ECONOMOU AVE	05:06	17:32*	36	26	8
42-14L2	GAAA	PELHAM	MAMMOTH RD	05:07	20:42*	87	34	111
42-9L3	LB	WINDHAM	RANGE ROAD	05:09	06:10	1	1	88
41-16L1	D	HANOVER	GREENSBORO RD	05:23	07:30	2	7	1
41-39L2	KBAA	LEBANON	DERBY LN	05:26	12:07*	30	41	5
41-1L2	KA	LEBANON	ROUTE4 STONEY BK	05:40	14:00	8	21	21
42-9L3	FAA	SALEM	BROOKDALE RD	05:40	10:53*	77	12	10
41-16L1	EA	HANOVER	BERRILL FARM LN	05:47	12:09	6	22	1
42-14L2	GAAF	PELHAM	LANE RD	05:47	20:26*	110	39	10
41-11L1	E	LEBANON	MECHANIC ST	05:48	07:04*	73	16	1
41-11L1	AG	LEBANON	PINE TREE CEMETERY	05:55	10:08*	28	13	8
42-9L3	HC	SALEM	NORTH POLICY ST	06:07	02:28*	92	21	8
41-6L3	DAAAAD	HANOVER	KINGSFORD RD	06:10	21:39*	87	29	1
42-9L3	J	SALEM	NORTH POLICY ST	06:15	17:14	10	59	207
42-9L3	J	WINDHAM	NORTH POLICY ST	06:15	17:14	10	59	361

42-9L3	F	SALEM	NORTH POLICY ST	06:28	02:55*	116	27	17
41-16L1	D	HANOVER	GREENSBORO RD	06:32	08:51*	26	19	1
42-13L1	JAB	SALEM	ERMER RD	06:38	17:23*	58	45	53
41-1L3	BA	LEBANON	MASCOMA ST	06:45	08:10*	25	25	209
41-1L3	BAF	LEBANON	PINE TREE CEMETERY	06:45	11:30*	28	45	35
41-1L3	BAG	LEBANON	MASCOMA ST	06:45	11:30*	28	45	66
41-1L3	BAH	LEBANON	MASCOMA ST	06:45	11:34*	28	49	33
41-7L1	FAAAAAA	CANAAN	CHIEFS DR	06:45	19:57*	37	12	1
42-14L2	A	PELHAM		07:29	08:56*	25	27	246
42-14L3	A	PELHAM		07:29	22:29*	38	59	58
42-14L3	EBC	PELHAM	CHRISTOPHER LN	07:45	22:39*	62	54	6
42-18L4	A	PELHAM		08:15	12:59	4	44	2
42-18L4	A	SALEM		08:15	12:59	4	44	509
41-39L2	CA	LEBANON	POVERTY LANE RD	08:36	19:13	10	37	163
41-39L2	CA	PLAINFIELD	POVERTY LANE RD	08:36	19:13	10	37	23
42-9L3	KAAAA	WINDHAM	ROCKINGHAM RD	08:46	16:25	7	40	275
42-18L4	BD	SALEM	TROLLEY LN	08:57	16:58	8	1	18
41-1L2	BH	LEBANON	ABBOTT ST	09:04	17:45*	32	42	5
42-18L4	CCA	SALEM	DELAWARE DR	09:36	21:27	11	51	1
41-7L1	DAAAB	CANAAN	SOUTH RD	09:44	18:31*	32	47	10
41-7L1	DAAAB	ENFIELD	SOUTH RD	09:44	18:31*	32	47	7
41-11L1	AE	LEBANON	BATCHELDER AVE	10:03	12:28*	122	24	1
41-7L1	HAAD	CANAAN	EGGLESTON RD	10:08	21:00*	34	52	1
42-9L3	FE	SALEM	WEBSTER ST	10:32	16:29*	101	56	8
41-6L4	BB	HANOVER	BUELL ST	10:53	05:17*	18	24	9
41-1L1	DABEG	HANOVER	BLUEBERRY HILL RD	11:00	11:43*	24	43	7
42-13L2	CF	SALEM	NORTH MAIN ST	11:06	13:24*	26	18	11
41-6L3	DAC	HANOVER	EAST WHELOCK ST	11:37	22:00*	82	23	1
43-8L1	BBB	CHARLESTOWN	EAST ST	12:05	16:30	4	26	92
41-6L3	AB	HANOVER	THOMPSON TER	12:14	09:55*	93	41	1
43-8L1	E	CHARLESTOWN	OLD CLAREMONT RD	12:30	23:55*	131	25	1
41-16L1	HAAAI	HANOVER	DOGFORD RD	12:54	13:12	0	18	2
41-16L1	HAAAH	HANOVER	DOGFORD RD	12:54	11:50*	70	56	3
41-1L2	BAAB	LEBANON	DAISY HILL RD	12:56	13:15*	24	19	1
41-16L1	HAA	HANOVER	DOGFORD RD	13:12	20:27*	31	15	39
41-1L2	BAAAAAAA	CORNISH	ROUTE 120 ST	13:25	14:24*	24	59	1
41-6L3	AAC	HANOVER	WEST LEBANON RD	13:29	21:24	7	55	24

41-6L3	AAC	LEBANON	WEST LEBANON RD	13:29	21:24	7	55	46
41-6L3	AB	HANOVER	THOMPSON TER	13:38	13:38	0	0	6
42-13L2	FE	SALEM	MILLVILLE ST	13:38	14:39*	73	0	70
43-12L1	IC	ALSTEAD	RTE 123 ST	13:42	05:48*	16	6	32
43-12L1	IC	MARLOW	RTE 123 ST	13:42	05:48*	16	6	4
41-1L2	BAA	LEBANON	SCHOOL ST	13:47	15:04*	25	17	1
43-12L1	G	ALSTEAD	RTE 123 ST	13:58	03:25*	13	27	269
42-10L4	CAAAE	SALEM	POND ST	13:59	10:56*	44	57	27
43-12L1	EBBA	ALSTEAD	HOMESTEAD RD	14:00	09:53*	43	53	7
43-12L1	DAA	WALPOLE	VALLEY (0096) RD	14:09	12:49*	70	40	1
41-6L3	ABC	HANOVER	DAYTON DR	15:04	01:10*	82	7	1
43-8L1	EA	CHARLESTOWN	OLD CLAREMONT RD	15:17	08:19*	41	2	21
43-8L1	EAA	CHARLESTOWN	ACWORTH RD	15:17	18:33*	123	16	6
41-1L2	BAA	LEBANON	SCHOOL ST	15:42	17:20*	25	38	9
41-39L2	P	PLAINFIELD	OLD COUNTY RD	15:52	15:52	0	0	1
41-1L2	BAAAAA	PLAINFIELD	CONNECTICUT	15:55	18:46*	50	50	1
43-8L1	BAD	CHARLESTOWN	COOLIDGE RD	16:16	10:18*	138	1	1
41-6L2	B	HANOVER	SOUTH MAIN ST	16:30	08:51*	40	21	1
43-8L1	GCAA	CHARLESTOWN	OLD CLAREMONT RD	16:30	18:09*	121	39	1
42-18L4	EAA	PELHAM	BRADY AVE	16:33	10:37*	90	5	2
42-18L4	EAA	SALEM	BRADY AVE	16:33	10:37*	90	5	56
43-12L1	FBC	ACWORTH	STATE 123A RD	16:42	07:44*	63	2	13
43-12L1	FBC	WALPOLE	STATE 123A RD	16:42	07:44*	63	2	1
41-1L2	BAAAA	LEBANON	MERIDEN RD	16:45	12:04*	43	19	2
42-9L1	BL	SALEM	E MAIN ST	17:24	20:45*	51	21	30
42-18L4	CCB	SALEM	DELAWARE DR	17:25	04:57*	107	32	18
42-18L4	EAB	SALEM	BRADY AVE	17:33	19:00*	25	27	18
42-18L3	D	SALEM	SOUTH POLICY ST	17:35	08:52*	135	17	1
41-39L2	O	PLAINFIELD	OLD COUNTY RD	17:38	18:17*	24	39	10
41-39L2	O	PLAINFIELD	OLD COUNTY RD	17:38	15:30*	69	52	1
41-39L2	P	PLAINFIELD	OLD COUNTY RD	17:38	15:50*	70	12	1
41-39L2	MBB	PLAINFIELD	OLD COUNTY RD	17:38	15:39*	70	1	2
41-6L3	IACB	HANOVER	LYME RD	17:41	11:00*	17	20	31
43-12L1	I	ALSTEAD	RTE 123 ST	18:01	12:34*	18	33	33
43-12L1	IC	ALSTEAD	RTE 123 ST	18:01	16:06*	46	5	19
43-12L1	IC	MARLOW	RTE 123 ST	18:01	16:06*	46	5	4
43-12L1	J	ALSTEAD	RTE 123 ST	18:01	16:06*	46	5	35

43-12L1	KF	ALSTEAD	NORTH RD	18:01	16:06*	46	5	7
43-12L1	ICA	ALSTEAD	RTE 123 ST	18:01	16:06*	46	5	13
43-12L1	KD	ALSTEAD	NORTH RD	18:01	16:06*	46	5	7
43-12L1	M	ALSTEAD	OLD SETTLERS RD	18:01	16:06*	46	5	21
42-18L3	BA	SALEM	PLEASANT ST	18:11	11:28*	137	17	1
43-12L1	KE	ALSTEAD	NORTH RD	18:12	16:06	-3	-6	14
41-6L3	IACM	HANOVER	CARTER ST	18:54	11:09*	40	15	1
42-9L1	BK	SALEM	GRANITE AVE	19:00	20:57*	49	57	3
42-9L1	BK	SALEM	E MAIN ST	19:00	20:49*	49	49	96
41-1L2	BAAAAABAA	ENFIELD	WILLIAM GAGE RD	19:07	14:20*	19	13	1
41-6L3	M	HANOVER	HEMLOCK RD	19:17	14:27*	43	10	1
41-1L2	BAAAAAA	PLAINFIELD	CONNECTICUT	19:40	18:47*	47	6	1
43-12L1	FBAF	ACWORTH	CHARLESTOWN RD	19:40	17:24*	117	43	1
42-9L3	BA	SALEM	PLEASANT ST	20:07	13:48*	89	42	14
42-9L3	BAB	SALEM	TRAILERHOME DR	20:10	15:32*	115	22	5
41-1L2	BAAAAAABE	PLAINFIELD	EAST MAIN ST	20:29	18:49*	46	19	3
42-13L2	CAAABB	SALEM	LIBERTY ST	20:39	05:15*	56	36	19
42-13L2	CCA	SALEM	TOWNSEND AVE	21:00	16:38*	91	38	10
42-13L2	CB	SALEM	TOWNSEND AVE	21:03	14:50*	89	48	31
42-13L2	CAAAA	SALEM	SHANNON RD	21:20	17:51*	44	31	103
42-10L4	CAAA	SALEM	SOUTH BROADWAY	21:27	10:51*	37	24	306
43-12L1	KE	ALSTEAD	NORTH RD	21:28	16:15*	42	47	14
42-10L4	E	SALEM	ROSEWOOD AVE	21:32	09:25*	131	53	1
42-10L4	G	SALEM	LAWRENCE RD	21:48	23:37*	49	49	67
42-10L4	GA	SALEM	WHEELER AVE	21:50	00:11*	50	21	11
41-16L1	HAAAI	HANOVER	ELY ST	21:58	21:58	0	0	1
42-10L4	GA	SALEM	BUTLER ST	22:05	23:48*	49	43	87
42-10L4	GCA	SALEM	HUNTERS RUN ST	22:27	00:13*	49	46	7
43-12L1	DAABAE	ALSTEAD	PROCTOR RD	22:49	11:15*	84	26	1
42-13L2	CD	SALEM	NORTH MAIN ST	23:02	15:21*	88	19	26

Note:

* means the Time On occurred on a date separate of the Time Off

Customer Interruptions

December 2008 Ice Storm

December 13, 2008

Feeder	Branch	Town	Street	Time Off	Time On	Duration		Customers Affected
						Hours	Minutes	
42-9L1	F	SALEM	DYER AVE	00:57	21:10*	44	13	27
41-16L1	HAAA	HANOVER	DOGFORD RD	03:50	08:49	4	59	1
43-12L1	I	ALSTEAD	RTE 123 ST	05:35	16:18*	82	43	165
41-16L1	JAB	HANOVER	RENNIE RD	07:11	08:20	1	9	1
41-16L1	M	HANOVER	FERSON RD	07:14	21:43	14	29	1
41-16L1	N	HANOVER	THREE MILE RD	07:30	08:55	1	25	1
41-7L1	FAAAAAA	CANAAN	CHIEFS DR	07:33	19:56	12	23	1
43-12L1	KF	ALSTEAD	NORTH RD	07:36	17:44	10	8	7
42-10L4	GC	SALEM	BUTLER ST	07:37	23:39*	40	3	50
42-14L1	GAB	PELHAM	LEONARD DR	07:41	14:06	6	25	1
41-16L1	JAAA	HANOVER	THOMPSON RD	07:47	11:05*	27	19	1
42-14L2	CA	PELHAM	BURNS RD	07:59	17:05*	105	5	1
42-14L2	CAB	PELHAM	MARSH RD	08:03	20:24*	84	21	47
42-14L2	CABB	PELHAM	SAWMILL RD	08:03	16:53*	104	51	7
43-12L1	FBB	ACWORTH	BERYL MTN WEST RD	08:10	07:40*	95	30	1
43-8L1	BBB	CHARLESTOWN	EAST ST	08:14	17:30	9	15	1
42-9L3	F	SALEM	NORTH POLICY ST	08:16	08:50*	120	35	1
42-14L2	C	PELHAM	WINDHAM RD	08:17	17:04*	104	47	1
42-10L4	ED	SALEM	PATTEE RD	08:26	10:20*	97	53	9
42-14L2	CA	PELHAM	MARSH RD	08:37	20:40*	84	3	5
43-8L1	GCAA	CHARLESTOWN	OLD CLAREMONT RD	08:37	18:11*	105	33	1
42-9L3	FE	SALEM	NORTH POLICY ST	08:41	19:13*	58	32	22
42-14L1	IC	DRACUT	JERICHO RD	08:44	15:19*	78	35	2
42-14L1	IC	PELHAM	JERICHO RD	08:44	15:19*	78	35	42
41-16L1	L	HANOVER	FERSON RD	08:55	11:39	2	44	20
42-13L2	C	SALEM	ELLSMERE AVE	08:58	19:54*	82	56	11
41-16L1	HAAA	HANOVER	DOGFORD RD	09:00	17:16	8	16	1
41-6L3	IAC	HANOVER	LYME RD	09:07	14:30*	29	23	1
42-14L1	IAB	PELHAM	HILLCREST LN	09:08	22:24*	61	16	29
41-6L3	DAAAAC	HANOVER	VALLEY RD	09:17	18:31	9	14	8

42-14L1	I	PELHAM	JERICO RD	09:24	00:31*	39	7	149
41-16L1	J	HANOVER	HANOVER CTR RD	09:28	11:15	1	48	1
42-13L2	CC	SALEM	TOWNSEND AVE	09:31	14:42*	77	10	15
41-6L3	AADAA	LEBANON	OAKRIDGE DR	09:57	16:26	6	30	11
43-12L1	II	ALSTEAD	BORZI ST	10:41	14:44	4	4	1
42-9L3	FAAC	SALEM	BUSS RD	10:55	19:03*	104	8	1
42-14L2	BD	PELHAM	RITA AVE	11:13	22:07*	58	54	19
41-16L1	IJ	HANOVER	HANOVER CTR RD	11:15	09:06*	21	51	1
41-16L1	K	HANOVER	HANOVER CTR RD	11:39	21:40	10	1	22
42-13L2	GC	SALEM	MILLVILLE ST	12:19	21:13*	32	53	45
42-13L2	FD	SALEM	MILLVILLE ST	12:21	22:10*	33	48	38
43-12L1	IAAA	ALSTEAD	KIRK ST	12:38	18:02*	101	23	1
42-13L2	FA	SALEM	MILLVILLE ST	13:53	11:34*	69	41	75
42-13L2	CO	SALEM	DAWSON AVE	13:54	20:02*	78	9	10
42-10L2	KAAA	SALEM	SHERWOOD CIR	14:11	20:03*	77	52	29
42-10L2	LE	SALEM	STANWOOD RD	14:15	19:55*	77	40	1
41-6L2	E	HANOVER	W WHEELOCK ST	14:18	19:21	5	3	1
42-18L2	IE	SALEM	TIFFANY RD	14:35	07:37*	17	2	212
42-10L2	HB	SALEM	COLE ST	14:37	19:42*	77	5	1
42-18L2	P	SALEM	E MAIN ST	14:49	19:08*	28	18	54
42-10L2	JC	SALEM	E MAIN ST	14:51	20:02*	77	11	14
42-10L2	L	SALEM	BRIDGE ST	15:07	17:10*	74	3	184
42-10L2	LB	SALEM	MARSH AVE	15:09	19:46*	76	36	1
42-13L2	FD	SALEM	CAR MAR LN	15:10	23:00*	31	50	12
42-18L2	IA	SALEM	CLUFF CROSSING RD	15:12	09:12*	18	1	110
42-9L1	CE	SALEM	TAYLOR ST	15:19	18:00*	50	41	74
43-12L2	GB	WALPOLE	PROSPECT HILL RD	15:43	10:03*	18	20	13
42-13L2	DAAG	SALEM	ZION HILL RD	15:59	17:03*	73	4	3
42-18L2	GB	SALEM	PLAY CAMP RD	16:02	13:04*	117	3	1
43-12L2	MA	WALPOLE	WHIPPLE HILL RD	16:05	13:07*	45	2	1
42-10L2	M	SALEM	MATTHIAS ST	16:18	20:01*	75	43	10
41-1L2	AA	LEBANON	SLAYTON HILL RD	16:22	08:49*	16	27	1
42-13L2	DH	SALEM	BLUFF ST	16:26	15:29*	71	3	1
42-18L4	GC	SALEM	BROOKDALE RD	16:54	13:43*	44	49	100
42-18L4	GC	WINDHAM	BROOKDALE RD	16:54	13:43*	44	49	1
42-9L3	BB	SALEM	PLEASANT ST	17:03	13:45*	68	42	1
43-12L1	DAAF	WALPOLE	LINCOLN ST	17:08	12:51*	43	43	1

42-10L2	J	SALEM	E MAIN ST	17:09	19:55*	74	46	1
42-18L3	D	SALEM	SOUTH POLICY ST	17:18	08:26*	39	7	1
43-12L2	GAA	WALPOLE	SCHOOL ST	17:22	14:39*	21	17	49
42-10L2	I	SALEM	LAWRENCE RD	17:46	19:47*	74	0	1
43-12L2	HE	WALPOLE	KINGSBURY RD	17:52	21:50	3	57	1
43-12L2	M	WALPOLE	COUNTY (O164) RD	17:59	13:16*	19	16	53
43-12L2	MB	WALPOLE	COUNTY (O164) RD	17:59	16:33*	22	34	7
43-12L2	N	WALPOLE	CREHORE RD	17:59	16:33*	22	34	23
43-12L2	HBA	WALPOLE	RAMSEY HILL RD	19:36	20:43*	97	6	1
42-18L2	H	SALEM	BROOK VILL W RD	19:43	09:08*	85	25	1
41-16L1	JAB	HANOVER	HANOVER CTR RD	19:46	10:30*	14	44	8
42-10L2	I	SALEM	LAWRENCE RD	19:50	19:52*	72	2	1
41-16L1	JAAB	HANOVER	THOMPSON RD	19:56	11:04*	15	8	1
42-14L1	IAA	PELHAM	MELODY LN	20:07	13:59*	89	52	9
42-9L3	BAB	SALEM	PLEASANT ST	20:10	13:52*	65	42	32
42-10L1	AA	SALEM	HAIGH AVE	20:14	20:52	0	38	15
42-14L1	GAC	PELHAM	VICTORIA CIR	22:11	17:44*	67	33	10
43-12L2	HB	WALPOLE	MAPLE GROVE RD	22:19	10:12*	83	53	1
42-14L1	CA	PELHAM	ATWOOD RD	22:43	01:01*	26	18	231
42-10L1	AA	SALEM	HAIGH AVE	22:56	13:07*	14	11	1
43-12L2	N	WALPOLE	MERRIAM (0123) RD	23:09	19:18*	116	10	1
42-14L2	CAG	PELHAM	ECONOMOU AVE	23:17	20:29*	69	12	8
41-16L1	IAA	HANOVER	OFF DOGFORD RD	23:24	10:10*	10	46	1
42-13L1	FF	SALEM	GILLIS TER	23:28	10:09*	106	41	1
41-7L2	BBA	ENFIELD	CRYSTAL LAKE RD	23:52	19:24*	67	32	1

Note:

* means the Time On occurred on a date separate of the Time Off

Customer Interruptions

December 2008 Ice Storm

December 14, 2008

Feeder	Branch	Town	Street	Time Off	Time On	Duration		Customers Affected
						Hours	Minutes	
42-14L3	BAAAC	PELHAM	GAGE HILL RD	01:41	20:11*	42	30	149
42-13L1	D	SALEM	NORTH MAIN ST	03:24	05:17*	49	53	1
42-9L3	LC	WINDHAM	LAMSON ROAD	06:27	11:31*	77	3	1
42-18L2	GD	SALEM	MACGREGOR AVE	07:03	12:23*	77	20	1
42-13L1	EE	SALEM	NORTH MAIN ST	07:14	14:37*	55	23	7
42-14L1	CAA	PELHAM	DUTTON RD	07:15	01:04*	17	49	213
42-14L3	BAAB	PELHAM	GAGE HILL RD	07:17	21:30*	62	12	109
42-18L4	BD	SALEM	TROLLEY LN	07:32	08:15*	96	43	1
42-9L3	LAAB	WINDHAM	RANGE ROAD	07:35	16:34*	32	58	132
42-9L3	LAAB	WINDHAM	RANGE ROAD	07:41	19:41	12	0	164
42-14L3	BAAAAAA	SALEM	ROSEMARY ST	07:53	12:15*	76	23	15
41-16L1	JAA	HANOVER	HANOVER CENTER RD	08:07	11:00	2	52	4
42-14L3	BAAAB	PELHAM	OLD GAGE HILL N RD	08:17	20:53*	36	36	198
42-18L2	GAAAD	SALEM	BRADY AVE	08:19	11:26*	99	7	1
42-14L1	DA	PELHAM	OLD BRIDGE NO ST	08:34	11:46*	75	13	5
42-9L3	LBH	WINDHAM	SEARLES RD	08:44	11:33*	74	48	1
42-9L3	LBI	WINDHAM	SEARLES RD	08:44	11:33*	74	48	1
42-9L3	LC	WINDHAM	LAMSON ROAD	08:44	11:33*	74	48	1
42-13L1	E	SALEM	NORTH MAIN ST	08:46	05:16*	44	30	1
42-10L4	FA	SALEM	LINWOOD AVE	08:51	11:05*	98	14	1
42-9L3	LAABA	WINDHAM	WOODVUE RD	09:16	12:06*	74	50	1
43-12L1	EABA	LANGDON	FALL MTN REGIONAL	09:18	21:20	12	3	1
42-14L3	BAAC	PELHAM	GAGE HILL RD	09:21	21:12*	59	51	29
42-10L2	LCB	SALEM	DANA RD	09:41	19:54*	58	13	1
43-12L2	EEC	WALPOLE	ELM (0044) ST	09:45	11:17*	97	32	1
42-10L1	AAB	SALEM	HANSON AVE	09:45	10:52*	97	7	1
43-12L1	FBA	ACWORTH	TOWN RD	09:47	11:05*	49	18	1
42-9L3	LD	WINDHAM	MAPLE ST	09:48	13:48*	76	0	1
41-7L1	FABA	GRAFTON	UPPER GRAFTON RD	10:07	18:50*	56	43	1
43-8L1	GA	CHARLESTOWN	THOMAS AVE	10:26	09:44*	71	17	1

41-1L2	BAAB	LEBANON	DAISY HILL RD	10:29	20:53	10	24	1
42-9L3	LAABA	WINDHAM	WOODVUE RD	10:44	11:34*	96	50	1
42-10L4	FA	SALEM	LINWOOD AVE	10:55	22:35*	83	40	1
42-10L4	CAAA	SALEM	SOUTH BROADWAY	10:56	21:45	10	49	166
42-10L4	CAAAA	SALEM	POND ST	10:57	10:31*	23	34	1
42-13L2	C	SALEM	NORTH MAIN ST	10:59	10:55*	95	55	1
41-6L2	B	HANOVER	SOUTH MAIN ST	11:02	15:29	4	26	1
42-9L3	LAAA	WINDHAM	EDGEWOOD RD	11:09	12:03*	72	54	1
42-14L1	GAB	PELHAM	LEONARD DR	11:11	18:25*	55	13	1
42-9L3	LAACA	WINDHAM	INDIAN ROCK 2 ST	11:16	12:14*	72	57	1
41-16L1	IAE	HANOVER	ZWULAK DR	11:26	19:50	8	24	1
42-10L4	CAAABB	SALEM	BRENTWOOD AVE	11:29	20:40	9	11	44
42-13L2	GB	SALEM	DYER AVE	11:30	20:54*	81	23	1
43-12L2	GBA	WALPOLE	COUNTY (0058) RD	11:36	13:08*	25	32	1
43-12L1	GAA	ALSTEAD	SUNSET RD	11:42	17:04*	101	22	1
42-9L3	L	WINDHAM	RANGE ROAD	11:43	13:32	1	49	348
42-9L1	BAD	SALEM	SOUTH BROADWAY	11:49	10:49*	46	59	11
42-14L3	BAAAEA	PELHAM	ORCHARD LN	11:53	12:04*	48	11	9
42-18L4	H	SALEM	PELHAM RD	11:56	22:40*	58	43	1
42-13L2	CC	SALEM	TOWNSEND AVE	12:07	20:03*	55	56	5
42-13L1	EBC	SALEM	KENYON RD	12:22	10:45*	46	24	13
42-14L2	BA	PELHAM	OLD GAGE HILL SO RD	12:37	20:43*	56	6	5
42-9L1	C	SALEM	NORTH BROADWAY	13:08	11:25*	94	17	1
42-9L1	BB	SALEM	CHURCH AVE	13:08	12:31*	95	23	1
42-14L1	IJ	PELHAM	JERICO RD	13:10	00:33*	11	23	1
42-10L2	HA	SALEM	ACKERMAN ST	13:26	16:53	3	27	8
41-6L3	EA	HANOVER	BARRYMORE RD	13:32	20:41	7	9	1
42-9L1	C	SALEM	TAYLOR ST	13:33	09:07*	91	34	1
41-16L1	L	HANOVER	FERSON RD	13:46	21:28	7	42	20
42-13L2	DAAF	SALEM	MATTHEW DR	14:03	13:45*	95	42	1
42-9L3	C	SALEM	PLEASANT ST	14:15	06:23*	64	7	13
42-14L3	BAAAAAB	SALEM	WINTER ST	14:17	12:30*	70	13	9
42-9L1	CA	SALEM	JOSEPH RD	14:22	06:26*	16	3	1
42-13L2	CAA	SALEM	E MAIN ST	14:25	11:15*	92	50	1
42-13L1	EC	SALEM	NORTH MAIN ST	14:37	17:01*	50	24	54
42-13L2	CO	SALEM	ELLSMERE AVE	14:53	17:45*	74	52	4
42-9L3	LB	WINDHAM	RANGE ROAD	14:57	19:08*	28	11	88

41-7L1	B	CANAAN	WEST FARMS RD	15:03	20:52*	53	48	1
41-7L1	BA	CANAAN	WEST FARMS RD	15:26	20:24*	52	57	1
42-10L2	LB	SALEM	KAYLA AVE	15:57	19:47*	51	50	1
42-13L2	DAAABB	SALEM	SHADOW LAKE RD	16:02	16:42*	48	40	44
42-13L2	DAAABC	WINDHAM	DOIRON RD	16:08	18:59*	74	51	13
42-13L2	GD	SALEM	HENRY ST	16:29	10:39*	90	10	1
43-12L2	EBBBA	WALPOLE	GRAVES RD	16:36	17:45*	25	9	2
42-14L3	BAAAAA	SALEM	ROSEMARY ST	16:40	12:09*	67	30	13
42-13L2	C	SALEM	NORTH MAIN ST	16:43	10:50*	90	7	1
42-13L2	FB	SALEM	WESTWOOD RD	16:48	22:19	5	31	1
42-13L2	DAAAB	SALEM	SHADOW LAKE RD	16:51	14:41*	45	50	10
42-9L3	G	SALEM	NORTH POLICY ST	16:52	16:47*	23	55	11
43-12L1	ICA	ALSTEAD	ROGERS RD	16:52	11:38*	42	45	1
42-13L1	JD	SALEM	PARKER CIR	17:00	02:15*	33	15	4
42-13L2	DAAAAA	SALEM	EAST BROADWAY ST	17:02	10:45*	89	43	1
42-13L2	DAAABCA	WINDHAM	COLE RD	17:04	18:03*	48	59	1
42-14L1	DAA	PELHAM	OLD BRIDGE NO ST	17:05	13:23*	68	18	3
42-9L3	KAE	WINDHAM	HARRIS RD	17:22	19:12*	49	50	10
42-14L3	BAAAABB	SALEM	ABBEY RD	17:33	05:42*	36	9	6
42-13L1	EAC	SALEM	SHANNON RD	17:38	10:02*	88	24	1
42-9L3	LCB	WINDHAM	STONEHEDGE RD	18:05	13:52*	67	47	1
42-13L2	DAAABH	SALEM	SHADOW LAKE RD	18:11	14:35*	44	24	23
41-16L1	HAAAF	HANOVER	WOODS END RD	18:27	19:51	1	24	1
42-14L1	CAE	PELHAM	CLARK CIR	18:27	22:02*	27	35	1
42-14L1	CA	PELHAM	DUTTON RD	18:27	15:59*	45	32	9
42-14L1	CAA	PELHAM	DUTTON RD	18:27	15:59*	45	32	213
42-13L1	J	SALEM	BEAVER BROOK RD	19:05	09:27*	86	22	1
41-1L1	DABEF	LEBANON	WESTVIEW LN	19:31	18:12*	22	41	2
41-1L1	DABEE	LEBANON	BLUEBERRY HILL RD	19:35	18:31*	22	56	1
42-9L3	LCA	WINDHAM	STONEHEDGE RD	19:51	13:51*	65	59	1
42-13L1	JAC	DERRY	GOODHUE RD	20:01	04:27*	56	26	1
42-13L1	FA	SALEM	ARLINGTON POND CT	20:02	19:50*	47	48	7
42-14L3	JC	PELHAM	CASTLE HILL RD	20:18	09:44*	61	26	6
42-13L2	CE	SALEM	TOWNSEND AVE	20:21	20:01*	47	40	10
41-16L1	KA	HANOVER	FERSON RD	20:41	21:30	0	50	1
43-12L2	O	WALPOLE	CREHORE RD	20:50	16:39*	19	48	12
42-9L1	BL	SALEM	MARTIN AVE	20:51	12:51*	88	0	1

42-14L2	CAAAC	PELHAM	BURNS RD	21:07	18:47*	45	39	6
42-13L1	FE	SALEM	NORTH MAIN ST	21:07	17:30*	44	23	15
42-13L2	CM	SALEM	OLIVE AVE	21:14	19:20*	70	6	1
42-13L1	DAE	SALEM	WHEELER DAM RD	21:29	14:58*	41	29	6
42-14L2	HC	PELHAM	MAMMOTH RD	21:43	18:16*	44	33	1
42-14L2	CAAAAAA	PELHAM	SHERBURNE RD	21:51	19:18*	21	26	58
42-14L1	CAB	PELHAM	DUTTON RD	21:54	15:59*	18	5	24
42-13L2	DAA	SALEM	ZION HILL RD	22:07	15:46*	41	39	1
42-14L2	CAAABA	PELHAM	BOWMAN LN	22:08	20:31*	46	22	7
42-13L2	FB	SALEM	MILLVILLE ST	22:08	18:45*	44	37	26
42-14L2	CAAAAA	PELHAM	MAMMOTH RD	23:13	14:02*	14	49	126
42-14L2	CAAAAA	SALEM	MAMMOTH RD	23:13	14:02*	14	49	1
42-14L2	CAAAAAB	PELHAM	SHERBURNE RD	23:13	19:17*	20	4	35
42-14L2	CAAAAAD	PELHAM	SHERBURNE RD	23:13	19:18*	20	5	13
42-14L3	EAD	PELHAM	WINDHAM RD	23:15	15:47*	88	32	1

Note:

* means the Time On occurred on a date separate of the Time Off

Customer Interruptions

December 2008 Ice Storm

December 15, 2008

Feeder	Branch	Town	Street	Time Off	Time On	Duration		Customers Affected
						Hours	Minutes	
42-9L3	KAE	SALEM	HARRIS RD	05:10	15:24*	82	14	3
42-9L3	KAE	WINDHAM	HARRIS RD	05:10	15:24*	82	14	3
42-14L2	CAAAAC	PELHAM	MAMMOTH RD	05:41	19:23	13	42	6
42-14L2	FA	PELHAM	NASHUA RD	06:01	13:02*	31	1	52
42-14L2	CAAAAB	PELHAM	MAMMOTH RD	06:58	03:35*	20	36	97
42-10L4	GC	SALEM	BUTLER ST	07:27	09:59	2	33	43
41-1L1	DAAAB	HANOVER	STEVENS RD	07:42	19:00	11	18	1
41-1L1	DAAAB	LEBANON	STEVENS RD	07:42	19:00	11	18	2
43-12L2	MI	WALPOLE	OLD STAGE RD	07:47	03:00*	43	13	2
42-10L2	JB	SALEM	BROWN ST	07:58	19:53*	35	55	1
42-14L3	G	PELHAM	WINDHAM RD	08:01	19:32*	83	31	6
43-8L1	EF	CHARLESTOWN	EAST ST	08:11	18:22*	58	11	1
41-16L1	HAAAF	HANOVER	DOGFORD RD	08:20	11:46	3	26	10
41-39L2	O	PLAINFIELD	OLD COUNTY RD	08:39	15:55	7	16	1
42-10L2	HA	SALEM	ACKERMAN ST	08:39	19:59*	35	19	8
41-6L2	B	HANOVER	SOUTH MAIN ST	08:42	01:56*	41	14	1
41-39L2	KBAD	LEBANON	TRUES BROOK RD	08:46	17:38	8	52	1
42-13L2	GA	SALEM	LAKE ST	08:53	10:43*	49	50	7
42-13L2	CAAAE	SALEM	LIBERTY ST	09:07	09:21*	48	14	1
42-13L2	GB	SALEM	DYER AVE	09:21	20:52*	59	31	1
41-6L3	JE	HANOVER	STORRS POND RD	09:22	16:02*	78	39	1
42-13L2	D	SALEM	BLUFF ST	09:26	09:23*	47	58	1
42-14L2	CAAABA	PELHAM	BUSH HILL RD	09:33	16:42*	31	9	73
42-14L3	JCA	PELHAM	CASTLE HILL RD	09:37	09:48*	48	10	1
42-14L3	EF	PELHAM	LEMERE DR	09:53	02:07*	40	13	6
42-13L1	EB	SALEM	ARLINGTON SHR DR	09:56	10:43*	24	47	11
42-10L4	FA	SALEM	LINWOOD AVE	10:05	11:06*	73	1	1
42-9L3	KAAAJ	WINDHAM	ROULSTON RD	10:12	18:42*	32	30	1
42-9L3	LCC	WINDHAM	ROULSTON RD	10:26	09:29*	47	3	1
42-9L3	KAD	SALEM	MASON DR	10:39	22:22*	35	43	1

42-13L1	G	SALEM	NORTH MAIN ST	10:56	14:16*	51	20	1
42-9L3	LCA	WINDHAM	STONEHEDGE RD	10:58	13:54*	50	55	1
42-9L3	KAD	SALEM	MASON DR	11:22	11:40*	72	18	1
42-9L3	LCB	WINDHAM	STONEHEDGE RD	11:44	10:59*	71	15	1
41-1L2	BAAAAABA	CORNISH	HOPKINS RD	11:49	15:56	4	7	15
41-1L2	BAAAAABA	PLAINFIELD	HOPKINS RD	11:49	15:56	4	7	1
42-14L3	BAAAD	PELHAM	VASSAR DR	12:16	21:09*	56	53	1
43-8L1	GCB	CHARLESTOWN	SCENIC HILL RD	12:35	11:03*	46	28	1
42-14L3	K	WINDHAM	ROWE RD	12:45	13:56*	49	11	1
43-12L1	AAAAABN	WALPOLE	OAK ST	13:23	11:30*	22	7	1
42-14L1	EAAAJ	PELHAM	MARSH RD	13:42	14:14*	48	32	7
42-13L1	EAB	SALEM	EYSSI DR	13:43	13:38*	71	55	1
42-9L3	LC	WINDHAM	ROULSTON RD	13:47	11:35*	45	47	1
42-13L2	DAAAAABA	SALEM	CHASE ST	13:57	12:29*	70	32	1
41-1L1	DABCF	HANOVER	MORTON FARM RD	14:16	19:15	4	59	1
42-14L2	H	PELHAM	MAMMOTH RD	14:44	20:29*	29	44	8
42-14L2	CAAAAAE	PELHAM	SHERBURNE RD	14:52	20:29*	29	37	9
41-39L2	O	PLAINFIELD	OLD COUNTY RD	15:02	16:05	1	3	1
42-10L4	CAAA	SALEM	POND ST	15:07	11:05*	67	57	1
42-14L1	I	PELHAM	JERICO RD	15:15	22:45	7	30	129
42-18L4	CCA	SALEM	DELAWARE DR	15:33	04:31*	36	58	1
43-12L2	GBA	WALPOLE	COUNTY (0058) RD	15:48	22:00*	30	12	1
42-18L4	GC	SALEM	BROOKDALE RD	15:49	14:01*	46	12	100
42-18L4	GC	WINDHAM	BROOKDALE RD	15:49	14:01*	46	12	1
41-39L2	P	PLAINFIELD	OLD COUNTY RD	15:57	15:59	0	2	1
42-13L2	CAAAAAH	SALEM	HOOK FARM P28 RD	16:03	23:07*	55	4	3
42-18L2	GAAABA	SALEM	SUNRISE DR	16:12	08:39*	64	27	1
42-9L3	KB	WINDHAM	NORTH POLICY ST	16:33	19:13	2	40	12
42-9L3	HA	SALEM	PUMPING STATION RD	16:33	17:21	0	48	122
42-14L1	IB	PELHAM	JERICO RD	17:08	22:49	5	40	49
42-13L2	CF	SALEM	NORTH MAIN ST	17:13	16:39*	23	26	11
42-13L2	DAAAAAA	SALEM	HENRY TAYLOR ST	17:15	23:17*	54	1	5
42-14L1	IAC	PELHAM	GARLAND AVE	17:34	16:56*	23	23	20
42-10L4	CAAAA	SALEM	POND ST	17:43	06:52*	61	10	1
42-13L2	IA	SALEM	HENDERSON CIR	17:44	03:48*	58	4	1
42-10L4	H	SALEM	BIRCH HILL RD	17:51	09:24*	63	33	1
42-14L2	CAAAA	PELHAM	MAMMOTH RD	18:35	10:34*	63	59	1

42-9L3	KA	WINDHAM	OLD ROCKINGHAM RD	18:45	11:03*	64	18	1
42-9L3	HAA	SALEM	DARRYL LN	18:57	22:25*	27	28	1
42-9L1	CEA	SALEM	HOWARD ST	18:59	20:46	1	47	16
42-9L3	KAAAAAA	WINDHAM	HUNT RD	19:20	11:58*	64	38	1
42-14L2	CAAAAC	PELHAM	MAMMOTH RD	19:25	21:00*	25	35	1
42-9L1	CEB	SALEM	IRVING ST	19:53	03:33*	55	39	1
42-13L2	DBAA	SALEM	LAKE ST	19:54	16:55*	45	0	48
42-14L2	HA	PELHAM	JEREMY HILL RD	20:31	20:39*	24	8	6
42-9L3	LAAB	WINDHAM	WILDWOOD RD	20:41	17:07*	44	27	4
42-13L2	DAAABE	SALEM	GREENWOOD ST	20:51	14:14*	65	23	1
42-9L3	LBI	WINDHAM	SEARLES RD	20:58	11:37*	38	38	1
42-10L4	GA	SALEM	WHEELER AVE	20:58	14:37*	65	38	4
42-9L3	LB	WINDHAM	GOV DINSMORE RD	21:18	20:46*	47	27	1
42-9L3	LAABE	WINDHAM	WEST SHORE RD	22:07	11:17*	13	10	52
41-1L2	KA	LEBANON	ROUTE4 STONEY BK	22:18	22:55	0	37	21
43-12L1	FBA	ACWORTH	TOWN RD	22:46	00:19*	1	33	64
42-14L1	IB	PELHAM	APPALOOSA AVE	22:59	08:25*	33	26	6

Note:

* means the Time On occurred on a date separate of the Time Off

Customer Interruptions

December 2008 Ice Storm

December 16, 2008

Feeder	Branch	Town	Street	Time Off	Time On	Duration		Customers Affected
						Hours	Minutes	
42-14L1	FD	SALEM	MARIANNA RD	00:01	14:53*	62	51	9
42-18L4	EAAAAA	PELHAM	NANCY AVE	00:26	03:01*	26	35	22
43-12L1	D	ACWORTH	ROUTE 123 ST	01:14	02:24	1	10	163
43-12L1	D	ALSTEAD	ROUTE 123 ST	01:14	02:24	1	10	845
43-12L1	D	LANGDON	ROUTE 123 ST	01:14	02:24	1	10	233
43-12L1	D	MARLOW	ROUTE 123 ST	01:14	02:24	1	10	4
42-9L3	D	WALPOLE	ROUTE 123 ST	01:14	02:24	1	10	307
41-6L4	AB	HANOVER	THOMPSON TER	02:04	02:04	0	0	6
42-14L1	CCD	SALEM	DELAWARE DR	04:28	15:15*	34	47	2
42-13L2	CAAAAAE	PELHAM	SHERBURNE RD	05:05	16:44	11	40	9
43-12L1	GA	HANOVER	KING RD	05:55	11:19*	29	24	2
42-18L4	KAD	SALEM	MASON DR	06:16	16:27	10	11	1
42-9L3	CAAABD	SALEM	LIBERTY ST	06:31	18:43	12	12	11
42-14L3	BA	HANOVER	SOUTH MAIN ST	07:37	08:29	0	52	9
43-12L1	FAAC	ACWORTH	FOREST RD	07:38	13:50*	30	12	1
42-14L2	FAAC	ALSTEAD	FOREST RD	07:38	13:50*	30	12	1
42-14L2	EAAAE	PELHAM	MARSH RD	07:45	08:23*	24	38	4
42-18L4	CC	SALEM	DELAWARE DR	07:47	04:28*	20	42	12
43-8L1	FC	SALEM	LUCILLE AVE	07:49	22:38	14	49	1
43-12L2	EAAAAAB	WALPOLE	OLD DREWSVILLE RD	08:03	20:00	11	57	1
42-13L2	FAABA	SALEM	SOUTH SHORE RD	08:08	16:25	8	17	14
42-13L1	CAAAAAA	SALEM	J.C.C.CAMP RD	08:09	16:50*	56	41	4
42-14L3	EBB	SALEM	AULSON RD	08:14	11:30*	51	16	1
42-14L2	BAAAD	PELHAM	GAGE HILL RD	08:19	18:51	10	32	13
42-13L2	BAAAAE	PELHAM	PELHAM RD	08:25	16:05*	31	41	4
42-10L4	DAAABD	WINDHAM	ALLEN RD	08:30	14:37	6	7	1
41-16L1	FBCA	ACWORTH	BALL RD	08:32	09:38*	25	6	1
42-13L1	G	SALEM	BUTLER ST	08:34	13:34*	29	0	1
43-12L1	HA	PELHAM	JEREMY HILL RD	08:54	21:40*	36	45	1
42-9L3	JC	SALEM	TEAGUE DR	08:59	12:02*	51	3	1

42-18L4	CC	SALEM	DELAWARE DR	09:06	15:12*	54	6	1
43-12L2	KAD	SALEM	MASON DR	09:17	22:20	13	4	1
42-14L3	LAAG	WINDHAM	OLD RANGE RD	09:21	12:07*	26	45	1
42-10L4	BAAACA	PELHAM	MAPLE DR	09:49	19:11*	33	22	1
42-9L3	H	PELHAM	MAMMOTH RD	09:51	20:38	10	47	1
43-12L1	CC	SALEM	DELAWARE DR	10:09	05:08*	19	0	1
42-14L1	EB	SALEM	PATTEE RD	10:28	13:30*	27	2	10
42-9L3	EBBBAA	WALPOLE	GRAVES RD	10:42	21:30	10	48	2
42-14L1	EAAAA	PELHAM	NANCY AVE	11:00	14:15*	27	15	8
42-9L3	IJ	PELHAM	JERICO RD	11:07	11:44*	24	37	1
42-14L2	GAAA	PELHAM	MAMMOTH RD	11:27	20:22	8	55	111
42-9L3	HD	SALEM	JILL RD	11:46	11:14*	47	28	1
42-14L1	GA	CHARLESTOWN	THOMAS AVE	11:49	00:17*	12	28	1
42-9L3	BAAAEB	PELHAM	ST MARGARETS DR	12:09	15:53	3	44	8
42-14L1	I	DRACUT	JERICO RD	12:13	17:08	4	55	2
41-1L2	I	PELHAM	JERICO RD	12:13	17:08	4	55	102
43-12L1	FD	SALEM	MARIANNA RD	12:37	21:13*	32	36	1
42-14L2	EAAE	PELHAM	CRESCENT DR	12:58	23:01*	34	3	1
42-18L3	CAAAAB	PELHAM	WESTFALL NORTH RD	13:04	13:25*	48	21	1
42-14L3	FI	SALEM	BAILEY RD	13:16	10:49*	45	32	1
42-9L3	BAAAEA	PELHAM	PINERIDGE RD	13:32	09:50*	44	18	1
42-14L2	KB	WINDHAM	HAYES HART RD	13:32	10:24*	20	51	1
42-18L4	BA	PELHAM	OLD GAGE HILL SO RD	13:36	13:14*	47	38	1
43-12L1	LAAB	WINDHAM	RANGE ROAD	13:56	05:33*	15	37	136
42-14L2	EA	SALEM	BRADY AVE	13:58	08:35*	42	37	1
42-14L3	CAAAB	PELHAM	GUMPUS POND RD	14:28	13:53*	47	25	1
42-9L3	DAAAB	SALEM	SHADOW LAKE RD	14:45	20:00	5	14	10
42-13L2	BB	PELHAM	BALCOM RD	15:02	13:28*	46	26	1
42-14L2	DAAABH	SALEM	SHADOW LAKE RD	15:04	19:53	4	49	23
42-14L3	CAAAAABA	PELHAM	MISTY LN	15:11	10:35*	43	24	1
42-13L2	BAAAF	SALEM	LOWELL RD	15:23	10:41*	43	18	1
42-14L1	BAAA	LEBANON	MERIDEN RD	15:44	19:01	3	17	2
42-14L2	CAAH	SALEM	HITCHING POST LN	15:55	11:36*	43	41	1
42-14L3	FC	SALEM	LUCILLE AVE	15:57	12:55*	44	58	1
42-13L2	CAA	PELHAM	DUTTON RD	16:00	19:58	3	58	213
42-14L1	G	SALEM	BUTLER ST	16:02	11:24*	43	22	1
42-9L3	CAB	PELHAM	DUTTON RD	16:03	16:13	0	9	24

42-13L2	IB	ALSTEAD	GILSUM MINE RD	16:23	21:25*	29	2	1
42-14L3	I	ALSTEAD	ROUTE 123 ST	16:27	13:06*	20	38	1
42-9L3	FC	SALEM	PEGGY LN	16:29	05:17*	36	49	1
42-14L1	H	SALEM	NORTH POLICY ST	16:29	08:16*	39	47	1
42-13L2	CAAAAAE	PELHAM	SHERBURNE RD	16:49	10:43*	41	54	9
42-14L1	DAA	SALEM	ZION HILL RD	16:55	13:31*	44	36	2
42-9L3	DAAG	SALEM	ZION HILL RD	17:08	00:38*	31	30	3
42-14L1	IC	DRACUT	JERICHO RD	17:12	13:10*	19	58	2
	IC	PELHAM	JERICHO RD	17:12	13:10*	19	58	42
42-13L2	FD	SALEM	CAR MAR LN	17:14	00:03*	30	48	1
42-14L3	IC	PELHAM	MELODY LN	17:15	13:27*	44	12	1
42-9L3	BAAAC	PELHAM	OLD GAGE HILL N RD	17:35	09:49*	40	14	1
42-9L3	FC	SALEM	PEGGY LN	17:41	05:20*	35	39	1
42-9L3	HC	SALEM	QUEEN ANNE LN	18:22	14:38*	44	16	1
42-14L3	FD	SALEM	LONGWOOD RD	18:26	10:44*	40	18	1
42-18L4	BAAAD	PELHAM	GAGE HILL RD	18:53	19:20	0	27	54
42-13L2	FB	SALEM	WESTWOOD RD	18:59	00:01*	29	1	1
42-10L4	J	PELHAM	CURRIER RD	19:05	11:44*	16	39	5
42-14L2	DB	SALEM	PORCUPINE CIR	19:08	11:09*	40	1	1
42-14L2	FAC	PELHAM	HOMESTEAD RD	19:13	17:58*	22	45	1
42-14L3	GAAC	PELHAM	VALLEY FORGE DR	19:18	13:16*	41	58	1
42-14L3	BAAD	PELHAM	VASSAR DR	19:19	19:08*	23	50	1
42-9L1	BAAAD	PELHAM	GAGE HILL RD	19:27	14:01*	18	34	54
42-13L1	F	SALEM	DYER AVE	19:41	11:25*	39	43	1
42-14L2	GA	SALEM	BALL AVE	19:51	14:23*	18	32	1
42-14L1	CAAA	PELHAM	WOEKEL CIR	20:01	13:09*	17	9	106
42-13L1	BA	PELHAM	OLD GAGE HILL SO RD	20:29	14:05*	17	36	23
42-14L1	CAA	PELHAM	GRACE RD	20:42	03:41*	6	58	1
42-14L3	EC	SALEM	BLAKE RD	20:43	10:12*	37	29	1
42-14L3	GA	PELHAM	TALLANT RD	20:58	10:44*	37	46	1
42-13L1	BAAA	PELHAM	GAGE HILL RD	21:31	13:12*	39	41	1
42-14L1	GA	SALEM	NOWELL CT	22:49	11:12*	36	23	1
41-6L3								

Note:

* means the Time On occurred on a date separate of the Time Off

Customer Interruptions

December 2008 Ice Storm

December 17, 2008

Feeder	Branch	Town	Street	Time Off	Time On	Duration		Customers Affected
						Hours	Minutes	
43-12L2	EAAAA	WALPOLE	OLD DREWSVILLE RD	00:45	18:52	18	7	3
41-6L3	DAAAA	HANOVER	EAST WHELOCK ST	02:30	02:30	0	0	17
42-13L2	DAAAB	SALEM	SHADOW LAKE RD	05:41	21:30	15	48	10
42-9L3	FAABA	SALEM	SOUTH SHORE RD	07:18	19:00	11	42	1
42-14L3	BAAB	PELHAM	GAGE HILL RD	07:37	10:34	2	57	109
42-13L2	DAAABH	SALEM	HITTY RD	08:14	18:48	10	34	14
42-14L3	EF	PELHAM	WINDHAM RD	08:36	15:15	6	38	6
41-16L1	IA	HANOVER	DOGFORD RD	08:47	18:14	9	26	1
42-14L2	H	PELHAM	MAMMOTH RD	08:52	20:44	11	52	1
42-10L2	H	SALEM	LAWRENCE RD	09:17	23:10	13	53	1
43-12L1	DAAA	ALSTEAD	PRATT RD	09:21	19:19*	33	58	1
42-13L2	C	SALEM	NORTH MAIN ST	09:36	10:55*	25	19	1
42-14L3	BAAAAE	PELHAM	PELHAM RD	09:50	17:24	7	34	3
42-9L3	LAABE	WINDHAM	WEST SHORE RD	09:55	14:47	4	52	52
42-13L2	FB	SALEM	WESTWOOD RD	10:26	01:14*	14	48	1
42-13L2	CAAAA	SALEM	SHANNON RD	10:27	10:38*	24	11	1
42-14L3	BAAB	PELHAM	GAGE HILL RD	10:39	13:49	3	10	109
42-13L2	C	SALEM	LOU AVE	11:06	10:45*	23	39	1
42-13L1	DAAAA	SALEM	COVE RD	11:32	10:49*	23	17	1
42-9L3	LC	WINDHAM	LAMSON ROAD	12:02	15:11	3	10	6
42-9L3	LAAE	WINDHAM	RANGE ROAD	12:06	11:04*	22	58	1
42-9L3	FAA	SALEM	BROOKDALE RD	12:37	10:37*	22	0	1
42-10L2	BA	SALEM	KELLY RD	12:38	13:40*	25	2	1
43-12L1	I	ALSTEAD	RTE 123 ST	13:16	18:01	4	44	1
42-13L2	CAAAAAH	SALEM	HOOVER FARM P28	13:24	23:11	9	46	1
42-14L3	BAABB	PELHAM	DOREEN DR	13:50	10:18*	20	29	1
42-18L4	GA	SALEM	SYCAMORE AVE	13:56	10:40*	20	44	1
42-14L3	BAAB	PELHAM	WEBSTER AVE	13:58	19:08	5	10	1
42-13L1	EC	SALEM	GLEN RD	13:58	10:10*	20	13	1
42-14L3	BAAAD	PELHAM	WHEATON DR	14:04	09:47*	19	44	1

42-14L1	I	PELHAM	CURRIER RD	14:11	10:34*	20	22	1
42-14L2	CAB	PELHAM	SAWMILL RD	14:11	10:45*	20	34	1
42-14L1	CAAA	PELHAM	SPRING ST	14:12	15:33*	25	21	1
42-14L1	CAAAE	PELHAM	SPRING ST	14:20	17:05	2	46	21
42-14L1	CAAA	PELHAM	SPRING ST	14:20	14:27*	24	7	1
42-14L1	CAAAD	PELHAM	BRETT CIR	14:31	14:48*	24	17	1
42-13L2	GD	SALEM	SUMMER ST	15:02	09:35*	18	33	1
42-14L3	BAAAD	PELHAM	COLBY DR	15:19	09:45*	18	26	1
42-18L3	F	SALEM	MANOR PKWY	15:57	08:34*	16	38	1
42-13L2	F	SALEM	MILLVILLE ST	16:09	10:09*	18	1	1
42-10L2	JC	SALEM	E MAIN ST	16:14	21:18	5	4	14
42-14L3	BAAAC	PELHAM	OLD GAGE HILL N RD	16:15	09:50*	17	35	1
41-39L2	J	LEBANON	PLAINFIELD RD	16:54	19:33	2	39	88
41-39L2	J	PLAINFIELD	PLAINFIELD RD	16:54	19:33	2	39	123
42-14L1	IAB	PELHAM	CLYDESDALE AVE	16:59	13:44*	20	45	1
42-14L1	EAAAA	PELHAM	ALBERT ST	17:05	20:47	3	42	1
42-13L2	FB	SALEM	WESTWOOD RD	17:28	11:15*	17	47	1
42-14L1	CAAA	PELHAM	LITTLE ISLAND PKWY	18:22	14:21*	19	59	1
42-14L3	BAAB	PELHAM	KOSIK TER	18:34	10:43*	16	10	1
42-14L2	H	PELHAM	MAMMOTH RD	18:56	15:23*	20	27	8
43-12L1	IB	ALSTEAD	GILSUM MINE RD	19:45	14:03*	18	17	1
43-12L1	IAAA	ALSTEAD	KIRK ST	19:47	19:47	0	0	3
42-14L1	CA	PELHAM	DUTTON RD	22:07	14:24*	16	17	1
42-18L2	GD	SALEM	MACGREGOR AVE	22:27	10:52*	12	25	1

Note:

* means the Time On occurred on a date separate of the Time Off

Customer Interruptions

December 2008 Ice Storm

December 18, 2008

Feeder	Branch	Town	Street	Time Off	Time On	Duration		Customers Affected
						Hours	Minutes	
42-13L2	IA	SALEM	HENDERSON CIR	05:26	11:42	6	15	1
42-13L2	FB	SALEM	WESTWOOD RD	07:37	13:55	6	18	1
42-14L1	EAAAA	PELHAM	NANCY AVE	07:42	14:21	6	38	8
42-14L2	CAB	PELHAM	SAWMILL RD	08:23	14:10	5	47	1
42-9L1	C	SALEM	TAYLOR ST	09:12	12:54	3	42	1
42-10L2	J	SALEM	E MAIN ST	10:14	13:08	2	54	1
42-14L3	BAACA	PELHAM	COTE DR	10:17	16:17	6	0	1
42-14L3	BAAAAF	SALEM	PELHAM RD	10:29	17:07	6	38	1
42-14L3	BAAAAE	PELHAM	PELHAM RD	10:46	15:25	4	39	1
42-10L1	AAB	SALEM	HANSON AVE	11:19	13:55	2	36	1
42-14L1	EAAAAA	PELHAM	NANCY AVE	11:19	14:23	3	4	22
42-14L3	BAAAC	PELHAM	OLD GAGE HILL N RD	11:30	14:16	2	47	1
42-14L1	I	PELHAM	CURRIER RD	12:02	12:33	0	31	1
42-13L2	DAAAAAB	SALEM	SHORE DR	13:21	13:54	0	33	1
42-13L2	DAA	SALEM	ZION HILL RD	13:37	13:41	0	3	1
42-14L2	H	PELHAM	MAMMOTH RD	15:35	17:08	1	33	1
42-14L2	CAAAAAD	PELHAM	SPRUCE ST	16:27	17:01	0	33	1
42-14L2	GAAA	PELHAM	VALLEY HILL RD	17:44	19:31	1	47	1
42-14L1	EAAB	PELHAM	BELVINA CIR	20:08	22:19	2	11	1

Note:

* means the Time On occurred on a date separate of the Time Off

Granite State Electric Company**d/b/a National Grid**

Annual Report of Storm Fund Activity

For the Year Ended December 31, 2007

Month	Beginning Balance (a)	Monthly Contribution (b)	Monthly Interest (c)	Storm Charges (d)	Ending Balance (e)
January-07	\$0	\$0	\$0	\$0	\$0
February	\$0	\$0	\$0	\$0	\$0
March	\$0	\$0	\$0	\$0	\$0
April	\$0	\$0	\$0	\$0	\$0
May	\$0	\$0	\$0	\$0	\$0
June	\$0	\$0	\$0	\$0	\$0
July	\$0	\$0	\$0	\$0	\$0
August	\$0	\$10,000	\$34	\$0	\$10,034
September	\$10,034	\$10,000	\$103	\$0	\$20,138
October	\$20,138	\$10,000	\$173	\$0	\$30,311
November	\$30,311	\$10,000	\$243	\$0	\$40,553
December	\$40,553	\$10,000	\$313	\$0	\$50,866
Year Ended 12/31/07	\$0	\$50,000	\$866	\$0	\$50,866

Granite State Electric Company**d/b/a National Grid**Annual Report of Storm Fund Activity
For the Year Ended December 31, 2008

Month	Beginning Balance (a)	Monthly Contribution (b)	Monthly Interest (c)	June Storm Charges (d)	Dec. Storm Charges	Ending Balance (e)
January-08	\$50,866	\$10,000	\$349			\$61,216
February	\$61,216	\$10,000	\$414			\$71,630
March	\$71,630	\$10,000	\$479			\$82,108
April	\$82,108	\$10,000	\$436			\$92,544
May	\$92,544	\$10,000	\$488			\$103,032
June	\$103,032	\$10,000	\$540			\$113,572
July	\$113,572	\$10,000	\$494	(\$39,354)		\$84,712
August	\$84,712	\$10,000	\$374	(\$79,671)		\$15,415
September	\$15,415	\$10,000	\$85	(\$3,587)		\$21,913
October	\$21,913	\$10,000	\$112	(\$1,240)		\$30,785
November	\$30,785	\$10,000	\$149			\$40,934
December	\$40,934	\$10,000	\$191		(\$275,257)	(\$224,131)
Year Ended 12/31/08	\$50,866	\$120,000	\$4,111	(\$123,852)	(\$275,257)	(\$224,131)

Granite State Electric Company d/b/a National Grid

June 29, 2008 Storm Total O&M Restoration Costs
Between Normal and Incremental Costs

	Total Restoration <u>Costs</u>	Normal <u>Costs</u>	Incremental <u>Costs (1)</u>
Payroll charges excluding payroll overheads for GSE employees	\$23,633.90	\$4,108.88	\$19,525.02
Charges for transportation on GSE vehicles	\$3,462.23	\$3,462.23	\$0.00
Charges from outside companies	\$104,326.78	\$0.00	\$104,326.78
Total	<u>\$131,422.91</u>	<u>\$7,571.11</u>	<u>\$123,851.80</u>

(1) Incremental costs are defined as the costs which GSECo incurred as a direct result of the storm which were over and above GSECo's normal cost of doing business.

Granite State Electric Company
d/b/a National Grid

Incremental Costs associated with Storm of June 29, 2008

<u>Outside Companies</u>	<u>Amount</u>	<u>Jul-2008</u>	<u>Aug-2008</u>	<u>Sep-2008</u>	<u>Oct-2008</u>
Massachusetts Electric Company	\$10,065	\$10,065			
Harlan Electric Company	\$80,911		\$79,671		\$1,240
Items under \$10,000	<u>\$13,351</u>	<u>\$9,764</u>	<u>\$0</u>	<u>\$3,587</u>	<u>\$0</u>
Subtotal Outside Companies	\$104,327	\$19,829	\$79,671	\$3,587	\$1,240
Incremental Company Payroll	\$19,525	\$19,525	\$0	\$0	\$0
Total Incremental Costs Charged to Storm Fund	<u>\$123,852</u>	<u>\$39,354</u>	<u>\$79,671</u>	<u>\$3,587</u>	<u>\$1,240</u>

Granite State Electric Company d/b/a National Grid

December 2008 Ice Storm Total O&M Restoration Costs
Incurred Through December 31, 2008
Between Normal and Incremental Costs

	CY 2008 Total Restoration <u>Costs</u>	CY 2008 Normal <u>Costs</u>	CY 2008 Incremental <u>Costs (1)</u>
Payroll charges excluding payroll overheads for GSE employees	\$207,469.72	\$33,275.68	\$174,194.04
Charges for transportation on GSE vehicles	\$24,470.86	\$24,470.86	\$0.00
Charges from outside companies	\$100,754.07	\$0.00	\$100,754.07
Charges for employee expenses	<u>\$308.79</u>	<u>\$0.00</u>	<u>\$308.79</u>
Total	<u>\$333,003.44</u>	<u>\$57,746.54</u>	<u>\$275,256.90</u>

(1) Incremental costs are defined as the costs which GSECo incurred as a direct result of the storm which were over and above GSECo's normal cost of doing business.

Granite State Electric Company
d/b/a National Grid

Incremental Costs associated with December 2008 Ice Storm

<u>Outside Companies</u>	<u>CY 2008 Amount</u>	<u>Dec-2008</u>
Massachusetts Electric Company	\$12,407	\$12,407
National Grid USA Service Co.	\$83,639	\$83,639
Items under \$10,000	<u>\$4,708</u>	<u>\$4,708</u>
Subtotal Outside Companies	\$100,754	\$100,754
Incremental Company Payroll	\$174,194	\$174,194
Incremental Employee Expenses	<u>\$309</u>	<u>\$309</u>
Total Incremental Costs Charged to Storm Fund	<u><u>\$275,257</u></u>	<u><u>\$275,257</u></u>